

52 Ingestre Street, Wanganui. Phone 345 3666 or 345 3655, fax 345 2644, email rivercitypress@xtra.co.nz

# Rutherford Kitchen and Garden classes - practical lifelong learning

BY DOUG DAVIDSON

Lynne Vinsen wanted kids to understand where their food comes from and believed that there was "no better way to introduce them to good healthy food than to involve them in planting, growing and cooking vegetables."

She mentioned the idea to her friend Diane Henare, Principal of Rutherford Junior High, who was not only very supportive but also promised the use of the cooking classroom.

There were a few obstacles to overcome and Lynne says, "No one said no when I asked for their support. The community was absolutely wonderful." The project is a great news story, in-

volving many organisations and individuals, who gave and are still giving generously of the time and money to assist students to learn skills and knowledge, which will remain with them forever.

The Whanganui Community Charitable Trust provided funds to renew the kitchen utensils, the Waste Minimisation Fund covered the cost of recycling bins, a shade cloth for the green house and

also for compost, donations came from Bunnings with a wheel barrow and from John Bartley of Bayleys Real Estate.

"Gareth Carter from Springvale Garden Centre, kept giving us stuff including compost, seeds and seedlings," says Lynne. Later the students were taken to the Garden Centre to see what's involved in raising plants. Peas were grown and one student asked if he could eat them directly from the pod, and when he did, pronounced, "They taste better than real ones."

Initially Lynne's focus was on cooking but very soon Sue Miller and Peter Follows came on board offering to not only work on the nearby garden, but also to teach students gardening skills, something Sue and Peter are passionate about. They spent a number of weekends restoring the greenhouse and doing weeding and spreading compost while Sue does the teaching.



Kitchen and Garden organisers with some of the students

Nearby is an orchard planted five or six years ago by Sustainable Whanganui. Unfortunately it was neglected as was also the case with some citrus and feijoa trees around the school. However, Sustainable Whanganui was more than happy to return,

prune the orchard trees, move the citrus and feijoa trees to the garden area and provide advice for future care.

Lynne added, "We had an old bath tub donated and the students will be going to Sustainable Whanganui to see how

they can develop a worm farm."

The project has since developed more community connections. The students visited Pak 'n Save to see how a supermarket works and ran a burger making contest, thanks to The Citadel Café and restaurant in

Castlecliff. The winners not only won vouchers but also spent time cooking at the café.

Looking back Lynne says "the project has been absolutely awesome. It has achieved everything I really wanted it to."

*Continued on page 2*

**BEDROOM Specialists**  
**OPEN 7 DAYS**  
 Locally owned & operated  
 151 St Hill Street, Wanganui  
 Phone 06 345 6084

**Harcourts**  
 Whanganui  
 Looking to sell?  
 call me  
 Sue Ellis on  
 027 452 5986  
 for a hardworking, award winning sales agent

**Sue Ellis**  
 Licensed Real Estate  
 Agent REAA 2008

**Your New Kitchen**  
 Elegant, Unique, Handcrafted

**ROB O'KEEFE**  
 JOINERY

06 344 5040 | okjoiner.co.nz  
 368 Heads Road, Wanganui

Joinery | Kitchens | Stairs  
 Doors | Windows | Commercial

**DIMOCKS 100%**  
**BEDS R US & FURNITURE**

**LOUNGE SUITES - APPLIANCES - BEDS**  
**BEDROOM and DINING SUITES**

We are your locally owned and operated Home Appliance and Furniture Specialists. We care and are pleased to offer you the best service and price possible.

Suppliers of:  
 Sleepyhead, Morgan La-Z-boy, Fisher & Paykel, Bosch, Panasonic, Samsung, LG, Beko, Haier, Westinghouse.

**190 Victoria Avenue, Wanganui**  
**Phone 348 4877 • Open 7 Days**

**DEVON Homes**  
 More than just a house

Our plans or do you wish to design your own plan?  
**... Now you can !**

**www.devonhomes.co.nz**

Contact **Bernard REUTERS** 65A Great North Road, Wanganui. Phone: 06-345 2393 Email: reuters@devonhomes.co.nz



## Check out what's in this week's RCP

I was impressed not only with the cooking and gardening classes at Rutherford Junior High School but also by the fact they have been led by volunteers, Lynne Vinsen and Sue Millar. (See our front page story). Congratulations to them and Rutherford for these useful and valuable programmes.

There are a couple of travel stories. Jude Hamblin, who works in the District Council, spends her holidays and probably a fair bit of her income travelling overseas to ski (page 14). She chooses not the obvious spots, but some more way out ones – such as Kurdistan and almost all the other 'stan' countries in Central Asia.

The other is about David Brandenberger travelling the world in his recumbent solar powered trike – and he has been doing this since 2015 (page 2).

You might have heard of the Hare Krishna followers. Now you can see them in action in the Christmas Parade and also find out about them in an evening organised at Girls' College Hall (page 5).



**Doug Davidson,**  
journalist@  
rivercitypress.co.nz

There is an eulogy of Victor Silveira. I interviewed him and his wife back in 2014. They were a delightful couple. Victor passed away recently and Anita was keen for a "very positive article" to be written about his life. He was clearly an inspiring and loving man and husband (page 3).

Finally congratulations to Helen Puihi Puihi for her 'Pacific Communications & Leadership' Award, sponsored by the Ministry for Pacific Peoples (page 6). If you know Helen you will agree – thoroughly deserved.

- Doug Davidson

## Travelling around the world on a solar powered e-assisted recumbent trike (solar-trike)

It is a long description of a bike/trike and it needs an explanation. The trike (3 wheels) is a recumbent design – that is the rider is in a laid-back reclining position – and it tows a trailer which provides storage space but more important six solar panels, which provide power for his two batteries of his bike.

David Brandenberger from Switzerland has been travelling since 2015 through Central Asia, China, South Korea, around Australia and was in Whanganui recently. He says, "As a one-man-team without big sponsors, I carry the message to supply the world with alternative energies, to think outside the box, to live charity, to be self-confident and trust God."

A recumbent trike is recommended by many cyclists as it is so much more comfortable, more efficient (less wind resistant) and you have less chance of falling off. David's top speed is only 25kph although freewheeling downhill can be a lot faster. The maximum distance is about 50km "depending

on the hills. In Northland I had to push the trike."

The combined length of his trike and trailer is 555cm and it is a metre wide. It weighs about 260kg with food and water extra. He carries a guitar and art gear with him. He has been painting since 1988 and says, "My works jump between impressionism and expressionism or a combination of both."

The trip started in Czech Republic, where he picked up his trike and after reaching South Korea, he shipped his trike and trailer to Australia, travelling down Western Australia and then across the Nullarbor Plains. He says, "I carried 70 litres of water with me."

He adds, "Many people, especially in Turkey and Iran, would stop and look at my solartrike, including police, who seemed to find an official reason to do so, such as a passport check. In some areas it was so cold, such as in Kyrgyzstan where there was 30cm on ice on the roads, that he left his solartrike in a youth hostel and flew home, returning in summer."

The scariest experience on the trip, so far, he said was in China. "I was on a newly built road, which was down to one lane of gravel. I couldn't see because of the thick dust from the big trucks. I knew there was a sheer drop on one side, when suddenly a truck was about to run me over. Fortunately it responded to my air horn."

He was in Whanganui as a member of the 'Warm-showers' – the organisation



**David Brandenberger on his solar powered electric trike**

which offers free accommodation to cycle tourists. There is a membership of 85,000 worldwide and there are three of them at the Quaker settlement including Ann and John Handley. Ann told the RCP, "We have been

doing it for four to five years. It is mainly in the summer." Peter Watson and Lynneke Onderwater of Whanganui Bicycle Users Group (WBUG) are the others.

David is probably in the South Island by now. His

approach is "Open ended travel. Stop wherever I like." An optician by profession, he plans to travel till the money runs out and his next trip is likely to be in Alaska.

You can follow him on [www.d-t-b.ch](http://www.d-t-b.ch)



MADE IN NORWAY



**\$500 OFF**

Stressless® Recliners

**\$1000 OFF**  
Stressless® Sofas



IT'S TIME FOR

Stressless®

NZ DISTRIBUTOR

**DANSKE**  
MÖBLER

\* Some exclusions apply.

**WANGANUI FURNISHERS**

33 Victoria Ave | 06 345 4554

Open Mon - Fri 9am-5pm, Sat 10am-1pm

[enquiries@wanganuifurnishers.co.nz](mailto:enquiries@wanganuifurnishers.co.nz)

[www.wanganuifurnishers.co.nz](http://www.wanganuifurnishers.co.nz)

## Rutherford Kitchen and Garden classes - practical lifelong learning

*Continued from page 1*

The students learn to read the recipes, put the ingredients together, do the cooking – and there have been no mishaps. Students take the recipes home, (and any left-over food) and some of them will cook for their families." She spoke about how one girl had recently repeated a chicken stir fry dish for her family.

Principal Diane Henare says, "We are a decile 1 school and through programmes like this, we are breaking the cycle, helping to create a better community." She told the RCP about a student they farewelled at assembly that day. He said, "I want to be a chef." Watch out Peter Gordon, the celebrity chef from Castlecliff. Diane added, "One of the boys brought me a zucchini from the garden for my lunch."

The skills learnt in gardening and cooking are transferable apart from the obvious reading and numeracy ones. It is very much about building confidence to be used in other subjects and aspects of life. It is also about growing, using and eating healthy food. Lynne says, "The kids will now look at labels in the supermarket to check how nutritional the food is."

The school had a morning tea to thank the sponsors and to introduce them to the students on the programme.

There were 16 students in the cooking class and eight in the garden programme, with an even mix of boys and girls. Next year "there will definitely be two classes." Both Lynne and Sue will continue to be involved and to inspire.

**SALE**

**\$AVE**  
the **GST** VALUE

**On Resene Premium Paints, Wood Stains, Primers, Sealers, Wallpaper, Decorating Accessories and Cleaning Products**

*Come in and see us today at your local Resene ColorShop!*

**Whanganui: 17 Wilson St, (06) 348 0048 or shop online at [shop.resene.co.nz](http://shop.resene.co.nz)**

**Resene**

the paint the professionals use

Conditions: Buy Resene Premium Paints, Wood Stains, Primers, Sealers, Wallpaper, Decorating Accessories and Cleaning Products and get the GST value (15% off the full retail price) off at Resene ColorShops and participating resellers. The discount reduction will be calculated on the normal retail price OR if you have a Resene DIY Card you can get the Save the GST value sale discount and an extra 5% off. Excludes Wallpaper, decals, Crown, trade and industrial products, PaintWise levy and account sales. Paint offer also available at participating Mitre 10 MEGA, Mitre 10 and Hammer Hardware stores. Not available in conjunction with any other offer. Offer ends 29 January 2020.



# Victor Pereira Silveira - "Just loved life"



Victor and Anita at their Whanganui wedding

Back in June 5, 2014, the RCP featured Victor Silveira on our front page with the headline of "Paralysed and bed-ridden yet still 'very, very blessed'." He had plenty of reasons to feel sad and negative but the comments at his funeral held recently, focused on how he "just loved life."

He was bedridden for over eight years but used the time to arrange surprises for other people over the phone, especially the "love of his life", Anita. As their friend, Maureen McMillan said at his funeral, "His love for Anita was truly unbelievable." Anita adds, "He was so special. He treated me like a beautiful Queen."

They met in San Francisco when Anita was travelling overseas. They returned to Whanganui so that she would be close to her family. On her 40th birthday he bought her a car - again over the phone - arranged for

the RCP to give her the Bouquet of the Week and organised with Disney to have Mickey and Minnie to visit. As he told the RCP back in 2014, "Anita has long wanted to go to Disneyland and as this was impossible I wanted Disneyland to come to her."

He was determined that Anita would not be left with house maintenance costs when he died, so he bought a new, small home.

Maureen said at his funeral, "Tell me how many people get married to the same person twice, renew their wedding vows three times and take their grandmother away with them on their honeymoon?"

He and Anita were devout Catholics and Catholic sisters would come on a regular basis to give communion and the priest would visit. Anita says, "I am grateful to the Catholic Church. Their hospitality has been absolutely amazing." Anita adds, "I would also like to thank my family and friends for their support."

Anita was able to look after Victor until the very

end. She would phone him from work frequently to check on him and did everything from moving him in bed and providing painkillers. As Maureen says, "Victor couldn't have married anyone better."

## ~ In brief ~

1. **Found any spare left footed jandals?** A reader in Peakes Ave contacted us to say that they had two pairs of jandals at the back door. One went missing one night, then another. They were replaced with another pair - but again, the third left footed jandal went missing. They put it down to a left footed male missing a right leg or more likely a cat with a fetish for left-footed jandals. (How does it tell the difference?). If you have noticed an extra left-footed jandal or two or even three, please advise the RSP and we will arrange for their return.

2. **Christmas lights stolen.** Another reader contacted us about her Christmas lights being stolen. The thief would have to be a tall person or someone with a ladder. The lights have sentimental value. If you are aware of these lights please contact us.

Free  
until you  
are 18.

VICTORIA DENTAL

Make an appointment today

06 345 3222

Visit us at Victoria House

1a Rutland Street, Wanganui

# Gordon Park gets a helping hand from Whanganui Collegiate

Students from Whanganui Collegiate recently tackled the invasive veldt grass (Ehrharta erecta) at Gordon Park Scenic Reserve alongside Department of Conservation staff and Friends of Gordon Park volunteers.

Veldt grass is a fast-growing plant that originates from South Africa and was first recorded in New Zealand in 1943 in Wellington. It outcompetes native vegetation and prevents native seedling regeneration.

Furthermore, the recent wet weather followed by warmer conditions has provided the near perfect recipe for the grass to become well established in the reserve.

Forty-four Collegiate students and teachers were briefed by DOC Community Ranger, Jaycee Tipene-Thomas, on how to identify the grass and in groups set out to remove it.

Trevor, from Friends of Gordon Park, said having the large number of students helping in the bush made a dramatic difference. "That's something we will continue to maintain on our regular volunteer days."

Science teacher, Rosie Gibson who helped organise the day, said it was a great day. "The students



Collegiate School students at Gordons Park.

Photo by DoC Whanganui community ranger Jaycee Tipene-Thomas.

were challenged and learnt about the importance of paying it forward - not only for nature but for future generations."

The joint effort resulted in a significant amount of veldt grass being removed from the reserve and a greater understanding of the ecological significance of Gordon Park.

Friends of Gordon Park volunteer days are carried out on the second Tuesday (9am-12pm) and the fourth Thursday (1pm-3pm) of the month. If you want to volunteer contact the Whanganui office of the Department of Conservation - whanganui@doc.govt.nz



Top Service • Top Workmanship • Top Electricians

- 24/7 Service
- FREE Quotes
- Member of HAZARDCO
- For all your electrical requirements

Summit Electrical Services Ltd

0800 2 SUMMIT

0800 2 786 648

Todd Cowan - 022 325 0056



Find us on Facebook

Gonville **supervalue**  
just what you need

**THIS WEEK'S SPECIALS**

Fresh NZ Rump Steak

**\$12.99** kg

\$20 Trays Crumbed Chicken Schnitzel

1/2 Price only

**\$10.00** each

**WEEKEND SPECIAL - STARTS 7am SATURDAY**

**\$5.99** each

**1kg Bag Chicken Nibbles Plain or Marinated**

**NEXT WEEK'S SPECIALS - STARTING 16.12.19**

Frozen Pork Casserole Chops

**\$3.99** kg

\$20 Trays Fresh Diced Chicken

1/2 Price only

**\$10.00** each

**Super Meat Pack - 6kg Meat for only \$50 - plus Free Tray of Eggs Great Present for Christmas!**

**Stonefruits** Apricots, Peaches, Plums **\$4.00** kg

**PRODUCE**

Strawberries punnet

2 for **\$4.50** each

Onion 1.2kg bag or Carrots 1.2kg bag

**\$2.00** each

All items while stocks last (no rainchecks). Get in early.  
**47 Abbot Street, Gonville. Ph 06 344 3002**  
**Open 7am-8pm - 7 days**

**TEAM ONE** Roy White

Season's greetings & best wishes for 2020!  
We are available over the Christmas season.

**Marion Farr**  
021 572 033

**Karl Dorn**  
0272 742 727

Licensed Salespersons REAA 2008

## Golf results

**Castlecliff 9 Hole Club**  
Thursday, 5 December,  
Tee 2 Green, **Ladies:**  
Elaine Holden 30, Janice Donghi 35, Jan Grenside 37.

**Men:** Kevin Burke 30, Kevin Edmonds 35, Allen Wills 37. Raffle: Janice Donghi.



# Packed Christmas calendar at Enliven's Kowhainui Home

It's a busy time of year at Enliven's Kowhainui Home, with plenty of festivities planned in the lead-up to Christmas.

Festive decorations already adorn much of the home, including a grotto decorated with different themes.

Kowhainui Home Manager, Trish Boswell, says the home is now well-known for its Christmas decorations, to the point where they are donated decorations to use.

A unique event on the calendar is the annual potato growing competition. Residents planted potatoes in buckets in August and they were dug up in late November.

Kowhainui Home Diversional Therapy Team Leader, Frances Craven, says the potatoes are usually judged closer to Christmas, but an unfavourable spring meant the spuds were dug up earlier than planned.

After judging who grew the biggest and the most potatoes, they were sent to the kitchen to be cooked up and included in the residents' dinner.

Other events on Kowhainui Home's Christmas calendar include the annual Christmas Parade, which was held inside the home and featured residents, staff and members of the community.

Frances says a number of parties will also be



Kowhainui Home Diversional Therapist, Donna Freeman, judges the potatoes dug up by volunteer, Kevin Freeman



Santa's grotto is a highlight of Kowhainui Home's Christmas decorations

held for the residents, volunteers, day programme clients and Kowhainui and Abingdon villa residents.

Enliven's Kowhainui

Home and Villages in Otamatea offers independent retirement living, rest home and hospital level care, as well as short-term respite, health

recovery care and an engaging day programme. For more information call the friendly team on 06 349 1400 or visit [www.enlivencentral.org.nz](http://www.enlivencentral.org.nz).

# Aramoho Lunchbar and customers buy walker for popular local



Wendy with a sign thanking her generous customers

Gladys or 'Auntie Mabel' as she was known to the people behind the counter at the Aramoho Lunchbar and Takeaways, had been coming to the shop every Friday at 4.30pm for around 17 years to pick up her fish 'n chips and sometimes also the orders of "other oldies in the nearby flats."

Current owner, Wendy Spence, who has been at the lunchbar for a similar length of time says, "I noticed in the last six months a decline in Auntie Mabel's mobility and she was favouring one hip." Gladys herself told her that she was struggling to walk more than a couple of houses along, without having to rest.

Wendy decided to fundraise to buy a stroller/walker for Gladys. She put a

collection box on the counter explaining what it was for and promising to match what her customers donated. And they donated. It was on the counter for only four days with some customers donating a \$50 note.

"It touched their hearts. Auntie Mabel is a lovely lady and is part of the family around here. When her granddaughter got married in Australia recently, she brought in photos to show us."

The money was enough not only for the walker but also for a Goldair fan and a Christmas hamper of goodies.

Caregiver, Lynne Mori, contacted the RCP to tell us about the story saying, "How awesome is that." The presents arrived with Gladys totally unaware of what was happening.

**enliven**  
Positive Ageing Services



free phone  
0508  
ENLIVEN

*feel at home*  
with Enliven in Whanganui

Enliven creates elder-centred communities that recognises elders as individuals and supports them in a way that's right for them. Set amongst lovely picturesque landscapes, all Enliven facilities in Whanganui are purpose built with strong community connections.

**In the Whanganui region, Enliven offers:**

Kowhainui Home and Village, Otamatea • Abingdon Village, St John's Hill

retirement villages | rest home | hospital | dementia  
short term respite | health recovery | day programmes

For more information please visit:  
[www.enlivencentral.org.nz](http://www.enlivencentral.org.nz)



**Christmas  
opening hours**

Quality toys  
built to last!

Wednesday 4th  
and 11th December  
open until 7pm

Saturday 7th, 14th, 21st  
December  
open 9am-2pm

Tuesday 17th December until  
Monday 23rd December  
open 7am-7pm  
(12 hours per day!)

Christmas Eve  
Tuesday 24th December  
open 7am - midday

PAUA Products will be  
closed from Christmas Eve  
and reopening  
Monday 6th January

Shop online @  
[www.pauaproducts.co.nz](http://www.pauaproducts.co.nz)  
or call us on 0800 728 277



9 Park Place  
Extra parking  
around the back



# Hare Krishna chariot to feature in Christmas Parade

If you want colour, singing, music and dancing in the streets, you will love the 'Ratha Yatra' or Chariot Festival that will be part of the Whanganui Christmas Parade on Saturday, December 14. The large decorated chariot, complete with Hare Krishna deities on it, will be pulled along the Avenue.

The organiser is Dvarakanath Das who came here from Fiji and works at Axiom Plastics. He is at the same time a Hare Krishna priest and takes services up in Auckland where they have a temple. There are also two temples in Wellington.

The supporters are coming from out of town and include a swami (religious teacher) who travels around the world. Hare Krishna followers, who wear orange robes, are only those who have chosen celibacy. Dvarakanath Das will wear white. Expect plenty of chanting backed by drums, piano accordion and brass instruments.

After the Parade, the group is having an evening at the Girls' College Hall starting with a vegan dinner at 6pm.

The swami will be there as well as the Harinama Ruci Group providing live music. There is a \$1 entry cost and that covers everything, including face painting for the children and free henna for females. As their leaflet says, "Taste the Joy of Bhakti and begin your journey within."

Dvarakanath Das explains, "The Hare Krishna belief is that every animal and plant has a spirit soul which is part of the Godhead." There are differences in levels of consciousness, however.

There are four requirements – no meat, fish or eggs, no intoxicating substances including coffee, no gambling and no illicit sex. Chanting is important as it makes you God-conscious. Dvarakanath Das explains – "you repeat the name of Hare Krishna (after Lord Krishna) as it helps to connect you to him, just as when you say the name of someone you love – you see their picture when you say their name." He chants 16 rounds of his 108 beads each day starting at 3am. It takes him about two hours.

Their scripture is the



Hare Krishnas preparing for parade

'Bhavadav Gita – As it is.' He points out that this "is its original form as spoken by Lord Krishna. It teaches you how to live a better life, it uplifts you and nothing else can give you the same satisfaction."

The Hare Krishna movement is without caste, creed or religious af-

filiation. It has spread out from its origins in India with members throughout the world. Dvarakanath Das says, "The area of biggest growth is in the Ukraine."

Their parade float or chariot should be popular as it won first prize in the Christmas Parades in Auckland and Rotorua.

# Ohakea community water supply issues to be resolved

Horizons Regional Council are pleased to hear the Minister for the Environment's announcement last night that Government will fund \$10.8 million towards the cost of rural water supply to the community affected by contamination of water by firefighting chemicals at Ohakea Airbase.

Minister David Parker says that around 85 rural properties will be supplied with reticulated clean drinking and stock water rather than having to rely on tanks and bores.

"For the past two years the Ohakea community has been relying on temporary supplies provided by the NZ Defence Force," says Mr Parker.

Horizons Chief Executive, Michael McCartney, says it is great to finally have central government commit a financial contribution and provide some assurance to the community that a solution is coming.

"However we are still keen to discuss what an ongoing monitoring programme will look like and the need for central government to fund it," says Mr McCartney.

"What we know is that there is a significant contamination in the

groundwater and nearby waterways that is going to spread in the next 50-100 years.

"Contamination events such as this not only creates public health concerns, they can have long term social-economic impacts.

"An ongoing monitoring regime is essential for tracking progress of the contaminant to ensure responsiveness to any future

health or environmental issues are addressed promptly."

**RCP -**  
Locally owned  
& operated  
52 Ingestre  
Street,  
Whanganui

**COOPER TYRES**

**"Your Local Tyre Guy"**

**CHRISTMAS SPECIAL**

**Wheel Alignment \$49**

**ONLY WITH THIS VOUCHER!**

Limited to one per person  
Valid until 31 January 2020

Phone 343 8706  
191 Somme Parade, Wanganui

**DAVID JONES MOTORS** 35 YEARS  
Proudly Supporting The Community For

HONDA NISSAN LDV SSANGYONG SUZUKI MITSUBISHI MOTORS

Buy new and worry-free

**NO DEPOSIT FINANCE**

**SUZUKI**

5 YEAR WARRANTY PACKAGE 5 YEAR UNLIMITED KM ROADSIDE ASSIST

**NEW CARS FROM \$69 PW\***

Skip the hassle of second hand cars – get a brand new Suzuki from just \$69 a week and no deposit! Plus all new Suzukis come with a 5 year warranty package, roadside assist, and that new car smell. So why buy used? Hurry, offer available for a limited time.

\*\$69/week based on Celerio GLX Manual, \$15,990 plus ORC, total amount payable \$17,962.02; nil deposit, 3.9% p.a. fixed interest rate and 5-year term. On payment of on-road costs to the Dealer, finance payments include a \$305 documentation fee and \$10.35 PPSR fee. Offer available 3-31 December 2019. Normal lending and credit criteria apply. Excludes Jimmy, fleet purchases, demo vehicles and other promotions. For info on our Real Value 3 year/100,000 km comprehensive warranty, 5 year/100,000 km powertrain warranty, PLUS a full 5 year roadside assistance plan, visit [www.suzuki.co.nz](http://www.suzuki.co.nz)



## Photography exhibition by Whanganui Camera Club members at Edith Gallery

The photography Exhibition by Whanganui Camera Club members at the Edith Gallery (UCOL at 24 Taupo Quay) is well worth going to see. It is open for just a week until this Friday, December 13 from 10am to 3pm. The theme is 'Humanity & Earth' – 'Images demonstrating the impact, positive or negative of human beings on, and their interaction with, our planet.' Of course you could just go and admire some beautiful photography.

The subjects vary from scenes of waterfalls, fields, portraits, animals and birds, close-ups, shadows, rainy scenes and so on. There are some poignant ones such as Jacqui McGowan's 'Before the Fires' which is of a koala padding along the road, titled 'Before the Fires.' Another is of a human hand holding that of a Borneo Orangutan by Lynette Valjely.



Jacqui McGowan's 'Before the Fires'

Others that catch the eye include 'Abandoned Necessities,' a photograph by Tania Warbrick on an old broken TV with a rusty kettle in what you imagine to be a falling down house. 'Farm Contours'

by Paul Gardens is of different ploughed fields with lines and different colours, whereas 'Complete with Tripod' by Ray Anderson is of someone carrying a tripod upstairs – in shadows. There are some very effective black and white photographs and stunning colour ones such as 'On a Rainy Day' by Veronica Griffith.

Most of the photographs are for sale with prices from \$55 to \$265.

## Horizons Notes

with Cr David Cotton

There are a number of changes around the Horizons Council table with half of the twelve councillors new this term.

There is a very wide range of experience, age and gender. We also have a new Chairwoman, Dr Rachel Keedwell, who started her horizons councillor roll the same term as me in 2013.

I'm sure there will be a lot of policies that we agree on. Equally there will be a number of differences in the way we see Horizons moving forward over this period.

My philosophy is that any business including Horizons cannot be all things to all people. We need to specialize in

what we do.

An example of this is the running of the bus service. I totally agree there is a need; my understanding is that in most, if not all provincial towns in NZ the bus services have declining numbers and run at a loss. Just in the Whanganui area alone Horizons subsidizes this service by \$345,000 pa.

What I don't agree with is why rate payers / property owners should pay for this service.

Central Government receives petrol / diesel, road users' tax, speeding fines plus all the GST that goes with it - what does owning a house / property have to do with funding a bus service?

We have far too many



rivers that require our attention to be in the bus service business. Let's give it back to Central Government to run and concentrate on our core business.

I hope you have time to get out and enjoy the many attractions we have in our region over the festive season.

Remember I am here to represent you, contact me at any time. I'm working hard to ensure we have an affordable place to live work & play.

Merry Christmas

## Hellen Puhi Puhi wins 'Pacific Communications & Leadership' Award

Helen Puhi Puhi of Born and Raised Pasifika received an email saying "I am one of two winners of the 'Pacific Communications & Leadership' Award." The awards are organised by the SunPix Pacific Peoples Awards and sponsored by the Ministry for Pacific Peoples. Helen's response was "What is this all about?"

She soon found out from a colleague who had supplied her information details. She had been nominated by a former pupil, Maciu Vucago, who she taught 'Ranga Kura', a bi-lingual teaching programme at Whanganui Polytec. Maciu is now a lecturer at Victoria University in the International Pacific

Studies section. However, Helen couldn't attend the function in Auckland to receive the award in person as she was leading a group of students, parents and teachers to Fiji at the time. So she got her 12 year old moko, Maurice Mow, to accept it on her behalf. The Minister of Pacific People, the Hon William Si'o presented it. She says, "Maurice felt very important."

During the Festival of Cultures the organisers had made a video of Helen and it was shown at the function. The ceremony was live streamed and so Helen was able to see parts of it in Fiji. The function was later broadcast on TV1 on Tangata Pasifika.

Helen, who came to New Zealand from Fiji, has lived in Whanganui for 38 years. She started Born and Raised Pasifika Early Childhood Centre in Aramoho back in 2003. Since then she has started a second campus in Tawhero. It was the first pan Pacific early childhood centre in the country. Since then similar centres have started in Auckland, Porirua, Rotorua, Nelson and Christchurch. Helen is helping centres being set up in New Plymouth and Palmerston North.

Helen says, "It has been part and parcel of my life serving our community and celebrating their successes. It has given me a lot of pleasure and joy. I truly believe that each and every one of us is on this earth to contribute our unique God given gifts and talents to benefit mankind."

Helen Puhi Puhi with her 'Pacific Communications & Leadership' award



Meri Kirihimete  
Manuia le Kerisimasi  
Marau ni Siganisucu  
Kia manuia i te Kiritimiti



*Wishing you all a truly blessed Christmas!  
Special Pasifika thanks to everyone who  
have supported our pepes this year.*



**Born & Raised Pasifika**

Aramoho Centre phone (06) 343 5441  
bornandraisedpasifika@xtra.co.nz  
Tawhero Centre phone 344 7471  
pasifikalearningcentre@yahoo.com

**Born & Raised Pasifika Pasifika Learning Centre**  
Early Childhood Centre  
27 Totara Street  
2 Mitchell Street, Aramoho  
Tawhero

## Welcoming newcomers to our community

*"You can make a difference to a newcomer simply by starting a conversation or sharing a meal."*

Katy Newton – Welcoming Communities Co-ordinator

Newcomer information is available from:

- (06) 349 0001, 027 603 6984
- katy.newton@whanganui.govt.nz
- www.whanganui.govt.nz/welcome
- www.newzealandnow.govt.nz
- www.cab.org.nz



WHANGANUI  
DISTRICT COUNCIL  
Te Kaunihera a Rohe o Whanganui



Welcoming  
Communities  
TE WAHAROA KI NGĀ HAPORI



# Summer Twilight cycling series initiative to promote the sport

The Wanganui Cycling Club has started a new summer initiative with their summer twilight series of races on a Wednesday night starting from 5.30pm to 6pm. The races take place down the road from St Oswalds Church around the Western Line Circuit. Much of the 11km route is relatively flat or downhill until close

to the finish coming up Westmere Station Road. Youth riders do one lap with the club riders, with their race taking anywhere between 35 and 55 minutes.

The cyclists range in age from Huntly School pupils through to a few in their early 70's. Ben, Ron Cheatley's grandson, (the son of Bevan) was there. Having just turned 16, he

recently completed the Lake Taupo circuit in four hours 44 minutes.

Another Cheatley is Cath, who rode professionally in the USA and who, along with Dayle, runs Velo Ronney's bike shop. She is also the 'Development Officer' for the cycling club, a new role that she has just taken up. Her focus will be on introducing cycling

skills into schools and will be running a holiday programme in January.

The concept came after Huntley School and Collegiate approached them. Cath says, "Cycling gave me lots of opportunity. I would like to see something similar for other kids. Whanganui has great facilities, minimal traffic and great roads to cycle on. The velodrome track will also be used.

Rides for Youth "will be over double distances and based on having fun." She hopes to advise the dates of the holiday programme soon.



Some of the cyclists coming up the rise on Westmere Station Road.

## Taranaki features on Whanganui Summer Programme in January



Whangamōmona Hotel

Year after year Taranaki has been a magnet for Whanganui Summer Programme trips and this is so again in 2020, says WSP Trustee David Scoullar. Four trips are planned in the province in January.

The first trip is on January 3 and focusses on gardens. The Taranaki Regional Council has three magnificent gardens. The WSP visited Pukeiti last January and this time will visit the others — the magical arts and crafts garden Tipare on the outskirts of New Plymouth and the 4.5ha Holland Gardens near Kaponga. Morning tea will be at another nationally-recognised garden, King Edward Park in Hāwera.

The Patea Historical Society has guided visitors to a number of interesting sites over the last few summers and on January 9 will provide another look at the past in South Taranaki. Pā sites to be visited include Titokowaru's Tauranga Ika, a masterpiece of construction; Weraroa above the Waitōtara River, base for a Māori force of up to 2000 that gathered to oppose General Cameron's

advance; and the Oika redoubt near Whenuakura Pā. Also Tūtahi Church built on the site of the Tauranga Ika Pā — a significant place for Māori.

A day trip to Whangamōmona has been on the programme for years and is so popular it will be repeated on January 15. From Stratford the bus will go along the scenic Forgotten World Highway to a once-busy frontier town that has become a tourist destination. Lunch at the Whangamōmona Hotel with time to explore this historic village. Guide for the day is Jim Gilmour, who lived in the area for many years.

The last trip on the 2020 WSP programme is a day out on January 31 in the attractive Taranaki town of Stratford which is a tribute to the great bard, William Shakespeare, with 67 streets named after characters in his plays.

A host of attractions include a riverside walk, a unique glockenspiel, an art gallery and art studio along with an interesting sculpture park nearby. There will also be visits to a possum fur and leather shop and Eltham's cheese bar with opportunity for purchases.

You can book trips at the Whanganui i-SITE, Taupo Quay.

### SANTA SCHEDULE

Saturday	14 December	11AM - 1.30PM • 2.30PM - 5PM
Sunday	15 December	11AM - 1.30PM • 2.30PM - 4PM
Monday	16 December	11AM - 1.30PM • 2.30PM - 4PM
Tuesday	17 December	11AM - 1.30PM • 2.30PM - 4PM
Wednesday	18 December	10.30AM - 1PM • 2PM - 4PM
Thursday	19 December	10.30AM - 1PM • 2PM - 4PM
Friday	20 December	10.30AM - 1PM • 2PM - 4PM
Saturday	21 December	10.30AM - 1PM • 2PM - 4PM
Sunday	22 December	10.30AM - 1PM • 2PM - 4PM
Monday	23 December	10.30AM - 1PM • 2PM - 4PM
Tuesday	24 December	10AM - 2PM

### CHOIRS SINGING CHRISTMAS CAROLS

Saturday	14 December	10AM Salvation Army Choir
Sunday	15 December	2PM Community Choir
Wednesday	18 December	6.30PM Wanganui Male Choir
Thursday	19 December	6PM Community Choir
Friday	20 December	6PM Community Choir
Saturday	21 December	2.30PM Wanganui Male Choir
Monday	23 December	6.30PM Wanganui Male Choir

### LOVELIFELIVE FACE PAINTER

Sunday	15 December	9AM - 11AM
Saturday	21 December	11AM - 2PM
Sunday	22 December	11AM - 2PM
Tuesday	24 December	10AM - 2PM

## Trafalgar Square Entertainment Times

100 Taupo Quay, Wanganui | Phone 348 0314 | [www.trafalgarsquare.co.nz](http://www.trafalgarsquare.co.nz)



You may have noticed the hard working team from Beaver Trees working on your neighbours trees... Now is a great time to have all your tree maintenance taken care of, so why not take up our offer of a FREE Appraisal!

*Your Trusted Professionals*  
for over 50 years

A tree is a thing of beauty that adds value to your life, its worth spending money and time on.

**Specialists in**  
Difficult Tree Removal  
Full Tree Maintenance  
Pruning & Thinning  
Tree Reduction  
Stump Grinding

**BEAVER**  
TREE SERVICE

**VOUCHER**

This voucher entitles you to a **FREE TREE APPRAISAL**

**CALL US NOW** 0800 4 BEAVER | 0800 423 283

E: [office@beavertree.co.nz](mailto:office@beavertree.co.nz)  
[WWW.BEAVERTREE.CO.NZ](http://WWW.BEAVERTREE.CO.NZ)

**Only 1 more publication before Christmas!**  
Get your advertising booked in today!

River City Press  
Ph 345 3666  
email: [rivercitypress@xtra.co.nz](mailto:rivercitypress@xtra.co.nz)



# Musicians Club welcomes 'Music from Nashville, Tennessee'

Nashville based Bluegrass/Americana musicians, Rachel Baiman and George Jackson, will be playing a very special show December 14 at the Whanganui Musicians Club.

New Zealand native, George Jackson, was born to musician parents in Christchurch. Jackson has a degree in Jazz from Queensland Conservatorium of music and spent years on the Australian Festival Circuit. An avid student of American fiddle styles, Jackson eventually made his way to Nashville where he now lives and works.

"American music is melting pot music," says Jackson, "and you can hear the history of America through it. For example, the way that you use rhythm in your bow is very African and some of the tunes are Scottish or Irish in origin. I haven't been an American until now, which is why I like to write and play my own tunes, because that's me bringing myself, the New Zealander, into the mix".

Rachel Baiman was raised in Chicago by a radical economist and a social worker. After becoming an Illinois State Fiddle champion at age 17, she moved to Nashville to pursue music. She is a multi-instrumentalist and a singer/songwriter who has spent



Musicians George Jackson and Rachel Baiman

the last four years touring and recording. Speaking about her latest release, 'Thanksgiving', Rachel says:

"I find it hard to escape from the values that I grew up with and I feel compelled to write politically, to speak out about things that I've experienced or seen. Song writing is a unique opportunity to do that because it avails a more emotional vehicle for discussion. I love the political tradition of folk music, from Woody Guthrie to Tupac and my hope is that this record adds another voice to it."

The duo will be performing their own songs, as well as music from the traditional repertoire as they tour around New



Bob Cooper-Grundy and Kate Marshall Duo

Zealand and we are lucky to have them on our stage in Whanganui.

The support act is the Bob Cooper-Grundy and Kate Marshall Duo. They are based in the Wairarapa and play gigs regularly around the southern half of the North Island. The song list veers between swing sounds of Texas,

mixed with the blues, bluegrass, something approaching jazz and some pop songs served up in the Bob and Kate way.

The show is at the Musician Club Hall (formerly the Savage Club) on Drews Ave. General admission is \$20, members \$15. Doors open at 7pm. See you there!

# Trish celebrating 30 years with Idea Services

On December 5, Trish celebrated 30 years with Idea Services. She came to them as her mother had some mini strokes.

She was adopted as a baby into a family with three other adopted older sisters. Trish says, "My adoptive mother has done a lot of great work for me and I have come a long way with her support. I couldn't talk until I was 8 years old."

After attending Salisbury School in Nelson, which provides education in a residential setting for students whose complex learning needs are not being met in their local community school, Trish came to Whanganui in 1987 to live with her mother and, due to her mother's ill health, transferred to Idea Services.

She says, "I started in a flat on my own which was beside a residential home and was supported by the staff." Later Trish moved to a house with others but it didn't work out and she went back to flats on Idea Services property and for 18 months was in contract board.

Trish is now in a supported living arrangement in a house in town. In March 2020 she will have been there 14 years.

"I have autism and OCD, am bipolar and hyperactive and have mild disabilities. I also suffer from tension headaches and panic attacks."

Some time ago Trish went to Otago University "So that people from Canada could do some research on me. This included having non-medical injections in my head."

"I like swimming pools and have my own as I find swimming helps cool me in the hot months. I also like shopping and looking for deals and bargain hunting." Trish also enjoys listening to 'The Sound' especially to music of the 1970s and 80s.



Trish Metcalfe, 1989 when she first started at Idea Services



Trish Metcalfe today

DAY   DATE	SPECIALTY STORES	COUNTDOWN	THE WAREHOUSE
Tuesday 10 December 2019	9am - 5.30pm	7am - 10pm	8am - 10pm
Wednesday 11 December 2019	9am - 5.30pm	7am - 10pm	8am - 10pm
Thursday 12 December 2019	9am - 5.30pm	7am - 10pm	8am - 10pm
Friday 13 December 2019	9am - 5.30pm	7am - 10pm	8am - 10pm
Saturday 14 December 2019	9am - 5.30pm	7am - 10pm	8am - 10pm
Sunday 15 December 2019	9am - 4.30pm	7am - 10pm	8am - 10pm
Monday 16 December 2019	9am - 5.30pm	7am - 10pm	8am - 10pm
Tuesday 17 December 2019	9am - 5.30pm	7am - 10pm	8am - 10pm
Wednesday 18 December 2019	9am - 9pm	7am - 10pm	8am - 10pm
Thursday 19 December 2019	9am - 9pm	7am - 10pm	8am - 10pm
Friday 20 December 2019	9am - 9pm	7am - 10pm	8am - 10pm
Saturday 21 December 2019	9am - 7pm	7am - 10pm	8am - 10pm
Sunday 22 December 2019	9am - 7pm	7am - 10pm	8am - 10pm
Monday 23 December 2019	9am - 7pm	7am - 10pm	8am - 10pm
Tuesday 24 December 2019	9am - 5.30pm	7am - 10pm	7am - 9pm
Wednesday 25 December 2019	CLOSED	CLOSED	CLOSED
Thursday 26 December 2019	10am - 4pm	8am - 8pm	7am - 9pm
Friday 27 December 2019	9am - 5.30pm	7am - 10pm	8am - 9pm
Saturday 28 December 2019	9am - 4pm	7am - 10pm	8am - 9pm
Sunday 29 December 2019	10am - 4pm	7am - 10pm	8am - 9pm
Monday 30 December 2019	9am - 5.30pm	7am - 10pm	8am - 9pm
Tuesday 31 December 2019	9am - 5.30pm	7am - 10pm	8am - 9pm
Wednesday 1 January 2020	Optional	8am - 8pm	10am - 9pm
Thursday 2 January 2020	10am - 4pm	7am - 10pm	8am - 9pm

**eBikes**  
**eScooters**  
**eTrikes**  
**eMobility Scooters**  
**Foldup Bikes**  
**Off Road Bikes**

**eScooters available for HIRE now!**

**Sales, Service & Rentals**  
**Finance Available**

**eBikes**  
WANGANUI

73 Putiki Drive,  
Wanganui  
Phone 06 348 8008  
info@ebikewanganui.co.nz  
www.ebikewanganui.co.nz

## Trafalgar Square Trading Hours

100 Taupo Quay, Wanganui | Phone 348 0314 | www.trafalgarsquare.co.nz





# Mainstreet Whanganui



# CHRISTMAS Parade

*Followed by a free family concert at Majestic Square*

**THIS  
SATURDAY  
2.00pm**

## Santa Claus is coming to town!

On Saturday, 14 December the Town Centre will once again be full of Christmas joy as the Whanganui Christmas Parade rolls down Victoria Avenue at 2pm.

Kelly Sorrow is Mainstreet's Event, Promotions and Marketing Manager and works alongside Geoff Follett to co-ordinate Christmas floats, volunteers,

after party management and administration for the event. "This year's Christmas Parade will be bigger than ever, celebrating a true summer kiwi Christmas down our

beautiful city's Mainstreet," said Kelly. "As a team we love working together to bring a Christmas Parade that truly reflects the Whanganui community and to

encourage more of our community to come out and celebrate Christmas in the heart of our city". There will be an after party at Majestic Square at the completion of the

parade with entertainment, face painting & food carts available!

And of course... Santa will be making an appearance and doing his legendary lolly scramble!

Mainstreet and More FM have been running a competition for the last few weeks where primary school aged children can enter the draw to ride on the sleigh

with Santa.

The draw was made and the winners notified, which was really lovely hearing the excitement of the parents and children who received those phone calls.

Keep an eye on the Mainstreet Whanganui Facebook page for up to date information about the Mainstreet Whanganui Christmas Parade!





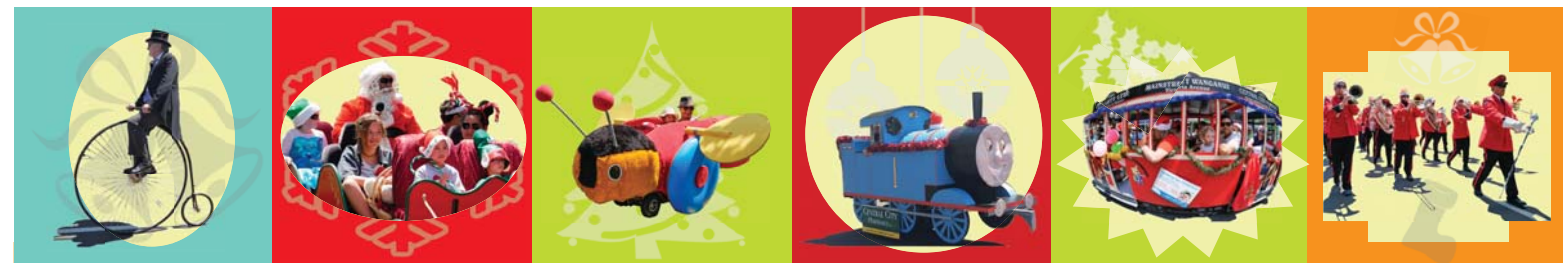
**SEE ME  
at the  
PARADE**

**Plumber Dan**

Registered Plumber

Plumbing, Gasfitting & Drainlaying

Daniel Goldsworthy 021 635 517



# Mainstreet Whanganui CHRISTMAS Parade

**Saturday 14th December, 2pm**

**WHANGANUI TOWN CENTRE**

*Followed by a free family concert at Majestic Square*



MAINSTREET  
WHANGANUI



WHANGANUI  
ALL YOU NEED (AND THEN SOME)

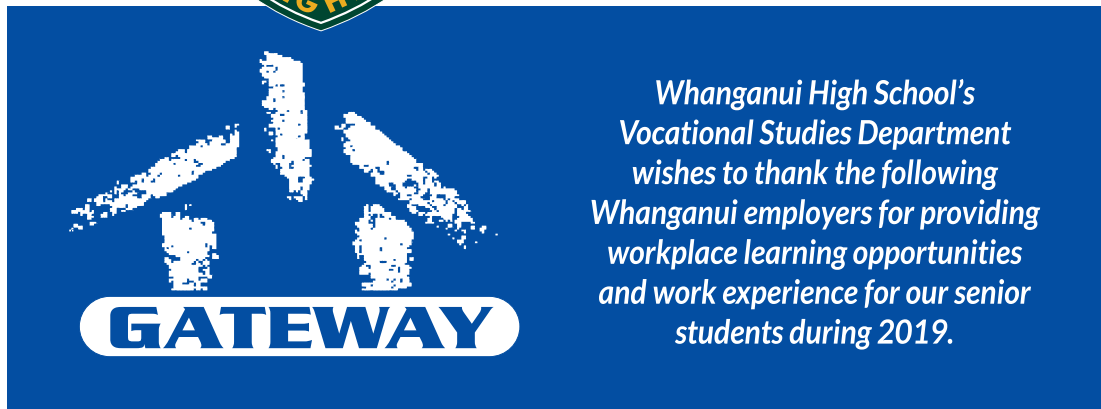
[www.mainstreetwhanganui.co.nz](http://www.mainstreetwhanganui.co.nz)





# WHANGANUI HIGH SCHOOL

[www.whanganuihigh.school.nz](http://www.whanganuihigh.school.nz)



*Whanganui High School's  
Vocational Studies Department  
wishes to thank the following  
Whanganui employers for providing  
workplace learning opportunities  
and work experience for our senior  
students during 2019.*



Plumber Dan  
Citadel Café  
Walker and Thomas  
The Cutting Edge  
Cohen's Business  
Whanganui District Council  
Cactus Creme  
Holdaways  
Lyndon Slaughter Builder  
Riding for the Disabled  
Clean Cut Mowers  
No. 1 First Vets  
Skelsey Plasterers  
Chamberlain's Electrical  
Parnells  
Mud Ducks  
Four Square Riverview  
Quality Variety Store  
Bushy Park  
Shaun Terrey Upholstery  
Alpha Doors  
Autoparts 2000  
Food Infuzion  
Fonterra  
Loaders  
Comvita  
Smart Start  
Devon Homes  
Cooper Coolpac  
Joe Lett  
Whanganui Gas  
Mint  
Villa Services  
Boyd Electrical  
Emmetts  
The Grooming Pad  
Devon Homes  
Animates  
Jamie O'Leary  
Steelmig  
Inspect-a-Vehicle

Arborco  
Clive Barritt Builder  
Q-West  
Wanganui Engineering and Marine  
Landlord Link  
Yellow House  
Dibben Swartz Suzuki  
Miracle Motors  
Tawhero School  
Michael Gepp Builder  
Little Kiwis Childcare  
Blank Canvas  
Ab Fab Florists  
Zest  
Barbertown  
Te Heti te Kohanga Reo  
Carlton School  
Slippers Refinishing  
Whanganui Rugby  
Cosford Construction  
Inspire Gym  
Ryland Roofing  
AME Electrical  
Kingsgate  
Sorensons  
Castlecliff Golf Club  
St Vincent de Paul  
Go Fox Electrical  
Scarlett Grace  
McDougall Logging  
Country Café  
The Lawn Barber  
Ali Arc  
Harriette Vine Kindergarten  
SPCA  
David Haynes Builder  
Cranstone Farm  
Display Associates  
Tom Ditchfield  
Gudsell Farms



Purnell St, Whanganui • Phone 06 349 0178





# WHANGANUI HIGH SCHOOL

www.whanganuihigh.school.nz

## IMPORTANT DATES

**Wednesday 22 January**  
Course Counselling

**Friday 24 January**  
Teacher Only Day

**Monday 27 January**  
School resumes for Year 9, Year 13  
& new students from all other levels

**Tuesday 28 January**  
School resumes for all year levels

### Tēnā koutou katoa.

Our junior and senior students have recently completed their various examinations - internal school examinations in English, mathematics, science and social studies for junior students and external NCEA assessments for senior students. We wish all senior students well in their external NCEA examination results.

Junior Activities Week was a great success with 48 different activities being offered by staff members to our Year 9 and Year 10 students. The activities ran through our House structure and connected to our LIFE school values: Learning, Integrity, Fellowship, Excellence. Consistent focus was placed on new or discovery-based activities, thinking or individual activities, team or community-based activities, competitive or creative activities.

At the Junior Prizegiving on Friday, 6 December the Whanganui High School House Champions Shield was awarded to Whenua House as the winning House for 2019 out of Awa, Maunga, Moana, Whenua. Please see our school website [www.whanganuihigh.school.nz](http://www.whanganuihigh.school.nz) for more details.

I wish all students and whanau a joyful and safe Christmas over the coming weeks. I am looking forward to welcoming all our Year 13 students and new students to Whanganui High School at the beginning of the school year on Monday, 27 January and then welcoming students of all year levels back to school the following day.

I am always happy to meet with students, whanau and members of the community to discuss any aspect of education and LIFE at Whanganui High School.

Ngā mihi nui

**Martin McAllen - Principal**

MEd Leadership with First Class Honours,  
PG Dip Ed Leadership, BA, Dip Tchg

PRINCIPAL'S  
NEWSLETTER  
FOR  
DECEMBER  
2019



#### NIAMH MONK

Niamh Monk, is training hard in preparation for being signed to Indiana State University, United States of America for 2020. The university is one of the top 15 NCAA rowing universities in the United States, and gives Niamh the opportunity to both study and have a high-performance rowing programme.

#### AMELIA NEALE

Term 3 has been a busy term for Amelia Neale. Amelia was able to fine tune her roller hockey skills at the recent Champions Cup 2019 Roller Hockey Tournament held in Brisbane, Australia. Prior to this tournament Amelia played for Whanganui at the New Zealand Nationals, where she came 1st (Women's team) and 3rd (Mixed Youth Age team).



#### KEELAN TUI

Keelan Tui has won the prestigious Prime Minister's Vocational Excellence Award. This award recognises the skills, knowledge and competencies that Keelan has developed for a vocational career and his determination and willingness to learn.



#### MADISON AUSTIN

Madison Austin has received the 'UCOL Accomplishment Award'. This is awarded to the student who has made the most significant achievement in 2019.



## Y8 SCHOLARSHIP WINNERS for 2020

Incoming WHS Students



(Front row, left to right)

**ENGLISH SCHOLARSHIP**  
Lachlan Burroughs

**MATHEMATICS SCHOLARSHIP**  
Noah Jones

**SPORTS SCHOLARSHIP**  
Elsie Butcher

**IVAN HIGGINS SCHOLARSHIP**  
Siobhan Sarkar

**SOCIAL STUDIES SCHOLARSHIP**  
Kasih Dilloway

(Back row, left to right)

**SCIENCE SCHOLARSHIP**  
Finnian Sinclair

**CONFUCIUS PRIZE**  
Yuri van der Wees

**SPORTS SCHOLARSHIP**  
Thomas Gowan

**CULTURAL SCHOLARSHIP**  
Ivan Adams

*Congratulations!*

#### STELLA WARNER

Stella Warner has been awarded the '2019 Whanganui Federation Women Young Player of the Year' award and has also been selected to represent our region at the National Age Group Tournament.



#### MITCHELL MCDOWELL

At the recent New Zealand Cowboy Action Shooting Championships, student Mitchell McDowell came away with the Champion title and trophy for a second year running, in the age group 13 and under. Mitchell has qualified to compete in the World Cowboy Action Shooting Society Championships in New Mexico, United States in May 2020.



#### ROCHELLE LOWE & ABIGAIL SEWELL

Rochelle Lowe and Abigail Sewell submitted 1500 word essays as part of the Senior Section of the annual Wynne Costley Research Scholarship. Abigail's essay explored women's involvement in World War I and was awarded first place and 'Most Outstanding Contribution'. Rochelle's essay focused on women in the New Zealand government and was awarded second place.



#### CONNOR MUNRO

Connor Munro was one of 25 finalists selected throughout New Zealand for a Progear student portrait photography competition, in association with the Gerrard and Marti Friedlander Charitable Trust. His photograph was displayed as part of the competition at the NorthArt Gallery in Auckland.





# Thinking out loud - Christmas traditions and peace

I have to admit, I'm not usually a particularly sentimental person. I recall hearing a quote several years ago that I quite like: "Tradition is the illusion of permanence." As a leader in the church, I often ponder traditions and try to assess whether they hold enduring value for us.

There are certainly some traditions we keep out of sentimentality, rather than because they continue to add value to our lives. Having said that, this time of year is very traditional and I love it! This is my fortieth Christmas overall; my twenty-second as an official adult (if voting age is the rite of passage), and my tenth as a church leader.

From as early in my life as I can remember, Christmas for me has centred around the birth of Jesus Christ. I grew up in a Christian home, so every Christmas was spent with our church family, celebrating the traditional narrative of Joseph and Mary - their journey to Bethlehem, the humble birth of their God's Son, the shepherds' angelic visit, and

the wise men's benevolent pilgrimage from the East. I will always hold onto this tradition, because it adds depth and value to my life every Christmas and throughout each following year.

Another tradition we celebrate in the church is called 'Advent' - a time of waiting. On each of the four Sundays leading up to Christmas Day, we take time to pause and reflect on an aspect of the Incarnation of Christ. (Incarnation is just a flash word for God coming to earth in human form - it has nothing to do with flowers!) The four aspects are love, joy, hope and peace.

I've been reflecting on these quite a bit over the last few weeks - partly as I prepare to preach on them and partly as I observe so much pain in the world around me. Up to thirteen people killed on White Island; an eleven year old girl fighting for her life and bereft of her siblings and parents after a horrific car accident; natural disasters such as bush fires and floods, causing large-scale destruction of life and property.

Some of the Christmas carols we sing aren't especially helpful as they paint a picture of Jesus coming to earth in tranquillity. "Silent night, holy night, all is calm, all is bright." Jesus was born at a time of significant unrest, in a town to which many had travelled to register as part of a census ordered by an invading Roman government. There wasn't much calm in the world that Jesus came to. And there's not much calm in the world we inhabit today.

In particular this Christmas, I've been reflecting on peace. We often think peace is the absence of conflict, or a state of both internal and external calm. But in John 14:27, Jesus told His disciples that the peace He brought and would leave with them, was not that kind of peace - He said, "Not as the world gives do I give to you."

His peace was different - it was and is an internal confidence that exists in the midst of conflict and chaos. Ever since Adam and Eve first brought sin into the world, humanity has never known both internal and external peace. There has always been

sickness, tragedy, destruction and death. The peace Jesus gives us transcends the chaos around us - it is a deep assurance that is found only in hope. What is our hope? God is restoring His creation - albeit not as quickly as we would like - and will one day complete the restoration. If we don't have that hope, we will not have peace. If this broken world and this chaotic life is all there is, we will

never experience the peace Jesus talked about. We can only have peace if we have hope.

This Christmas, as you see nativity scenes featuring the baby Jesus in the manger, I encourage you to ponder on the hope He brings to humanity - that His completed work on the cross has made a way for all of us to be reconciled to God our Creator and that this world is not our true home.

Jesus has gone on ahead to prepare a place for us; a place that is free of chaos and destruction, where there is no pain or suffering and where we may dwell for eternity. Now there's a hope that can bring us peace!

If you'd like to talk with me more about this topic (or almost anything else!), you're welcome to get in touch. Phone 345 3557 or email [nigel@centralbaptist.org.nz](mailto:nigel@centralbaptist.org.nz).



**Nigel Irwin**

Nigel Irwin is Senior Pastor of Whanganui Central Baptist Church, and Chairman of One-Church Whanganui.



## WANGANUI SECONDARY SCHOOL NEWS

### New principal for Whanganui Girls' College next year

This year has been a busy one for staff and students at Whanganui Girls' College. Some of the highlights this year have included; the Wendy production, Duke of Edinburgh tramps, skiing trips, ice skating, trips to parliament and the junior showcase.

Whanganui Girls' College believes in a holistic learning approach. We have been working hard on improving opportunities for learning with place-based learning. Plus we are thrilled to be the first secondary school in Whanganui to sign up as an Enviroschool.

Our ASTRA programme continues to shine and grow as part of the Positive Behaviour for Learning programme. Since the programme's implementation, NCEA pass rates are consistently above 90%, making them amongst the best in New Zealand. Our school is also very proud of the community work it



**Whanganui Girls' College athletes demonstrate the school spirit**

does.

We have made some positive changes to our curriculum for 2020. We see the importance of Te Reo to our young people and community and from next year it will be on offer to all Year 9 students.

We welcome a new Prin-

cipal, Sharon Steer to the school in 2020. We are delighted that we have been able to attract a leader of Sharon's calibre. Sharon is from Kelston Girls' College in Auckland and has considerable leadership experience as a deputy principal and senior lead-

er. We are also experiencing positive roll growth, which bodes well for the future. We wish our Whanganui Girls' College whanau and the wider Whanganui community a Meri Kirihimete and a Happy New Year.



**Wishing all of Whanganui a blessed and safe Christmas season.**

**And why not join us for worship at (the earlier time of) 9.30am on Christmas Day?!**

285 Wicksteed Street, Whanganui

**CENTRAL**  
BAPTIST CHURCH  
— Te Hāhi Iriiri ō Whanganui —

06 345 3557 | [centralbaptist.org.nz](http://centralbaptist.org.nz) | [facebook.com/wcbchurch](https://facebook.com/wcbchurch)



**Whanganui Girls' College**

*Where Girls Shine*

**Specialists in Girls' Education**

[www.whanganui-girls.school.nz](http://www.whanganui-girls.school.nz)  
06 349 0944



**WHANGANUI**  
HIGH SCHOOL  
[www.whanganuihigh.school.nz](http://www.whanganuihigh.school.nz)

*That we might have*

**LEARNING INTEGRITY  
FELLOWSHIP EXCELLENCE**

Pumell St, Whanganui • Phone 06 349 0178



**Cullinane College**

*"For love of God,  
life and learning"*

15 Peat Street, PO Box 5017  
Whanganui 4500  
Ph: 349 0105  
Email: [office@cullinane.school.nz](mailto:office@cullinane.school.nz)



**Whanganui City  
College**

The Heart of the City  
Challenging Ourselves for a Better Future

84 Ingestre Street, PO Box 4010, WHANGANUI  
Phone 06 349 0180  
[www.wcc.school.nz](http://www.wcc.school.nz)

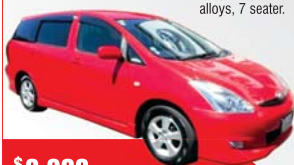


**BUY ANY USED VEHICLE and  
RECEIVE AN iPhone 11 or  
**FREE** SAMSUNG  
GALAXY S10e**

\*For a limited time. Until stock lasts. Conditions apply.  
Giveaway applies to Apple iPhone 11 64gb or a Samsung Galaxy S10e 128gb models only. Limited colours available

## 2008 TOYOTA WISH

1.8L, auto, tints,  
alloys, 7 seater.



**\$9,990**

## 2010 SUZUKI SWIFT GLX

1.5L, manual, only  
25,000kms, great  
colour!



**\$11,990**

## 2007 HONDA CRV SPORT

2.4L, auto, tints,  
alloys, leather  
seats.



**\$11,990**

## 2012 TOYOTA AQUA

1.5L, auto, tints, great  
colour, sporty,  
hybrid.



**\$12,990**

## 2017 SUZUKI SWIFT GL

1.2L, 5 speed manual,  
tints, alloys,  
smart looker.



**\$14,990**

## 1 YEAR WARRANTY 2013 TOYOTA PRIUS

1.8L, auto HYBRID, alloys,  
push button  
start.



Was \$17,490  
NOW **\$15,990**



## 2016 TOYOTA COROLLA GLX

Reverse camera, tints, alloys,  
beautiful to drive,  
4 to choose  
from.



Was \$18,990  
NOW **\$18,490**

## 2014 TOYOTA COROLLA ZR

1.8L, Auto, Top Spec,  
sedan, alloys,  
leather.



**\$18,990**

## 2016 TOYOTA COROLLA GLX

**7.25% FINANCE** 1.8L, auto, alloys,  
tints, tidy, only  
40,000kms.



Was \$21,990  
NOW **\$19,990**



## 2016 TOYOTA CAMRY ATARA S

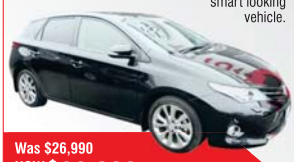
2.5L, auto, alloys,  
very tidy, only  
21,000kms.



**\$23,990**

## 2015 TOYOTA COROLLA ZR

1.8L, auto, alloys, tints,  
smart looking  
vehicle.



Was \$26,990  
NOW **\$22,990**

## 2015 TOYOTA CAMRY HYBRID

2.5L, auto, alloys,  
HYBRID, GL  
model.



**\$25,990**

## 1 YEAR WARRANTY 2016 TOYOTA PRIUS

1.8L, auto HYBRID, GX  
model, alloys, only  
36,000kms.



**\$27,990**

## 2014 JEEP COMPASS ALTITUDE

2.0L, alloys, driving,  
lights, only  
35,000kms.



**\$19,990**

## 2017 TOYOTA RAV 4 GXL

2.5L, alloys, tints,  
only 55,000kms,  
AWD, great  
colour.



**\$28,990**

## 2014 HYUNDAI SANTA FE ELITE

2.2L, turbo diesel,  
leather, 7 seats,  
alloys, NZ new.



**\$31,990**

## 2016 TOYOTA HIGHLANDER GXL

3.5L, auto, 7 seats,  
leather seats,  
cruise control,  
airbags.



**\$39,990**



## 2016 LANDCRUISER 70 SERIES

4.5L, V8, auto, double  
cab, flatdeck,  
bullbar, deck box.



**\$74,990**

## 2013 TOYOTA HILUX

3.0L, turbo diesel, manual,  
4WD, full service  
history, only  
77,000kms.



**\$31,990**

## 2019 TOYOTA HILUX

2.8L, turbo diesel, manual,  
2WD, alloys, new  
car kms.



**\$32,990**

## 2014 TOYOTA HILUX

3.0L, manual, turbo  
diesel, 4WD, side  
steps, alloys.



**\$33,990**

## 2015 TOYOTA HILUX

3.0L, manual, turbo  
diesel, 4WD, side  
steps, alloys.



**\$34,990**

## 2017 TOYOTA HILUX sr

2.8L, 4WD, turbo diesel,  
auto, alloys, only  
58,000kms.



**\$38,990**

## 2013 TOYOTA HIACE ZL

2.7L, auto, NZ new, 3 seats, only  
68,000kms.



**\$29,990**

## 2009 TOYOTA HIACE ZX

3.0L, manual, diesel, 12 seat  
minibus.



**\$31,990**

**GUYTON STREET, WANGANUI**

**Phone 06 348 8850**

**www.wanganuitoyota.co.nz**

**Open: Monday - Friday 8am-5pm  
Saturday 9am-3pm  
Sunday by appointment**

*After hours  
contact....*

**Wayne Brougham  
027 326 7211**

**David Gibson  
0274 759 650**

**Richard Nessling  
0273 488 859**

**Todd Clark  
0273 222 252**



**FINANCIAL  
SERVICES**





# Bouquet of the Week

We received the following Bouquet of the Week nomination for Mosston School teacher, Hayley Addenbrooke.

"My son has Autism Spectrum Disorder. He was home-schooled until he was seven and enrolled him at Mosston.

At the beginning of the year he found it difficult to engage in classroom activities and was having problems with his learning

and confidence. He needed teacher aide support every day and would remove himself from many activities.

Hayley and the team at Mosston have worked tirelessly with him through the year and helped him develop his confidence and have discovered ways to engage him in his learning and development.

We are particularly appreciative of Hayley for making the effort to get to know our son so well that she recognised he had injured himself after what seemed like a minor fall from his skateboard and a bump on the chin. As ASD can distort his recognition of pain, he thought he was fine when he had actually fractured his wrist in two places and a minor concussion. Hayley was able to see that his behaviour had changed and contacted us immediately.

Hayley is a young teacher with a lot of energy and great enthusiasm for her job. It is absolutely delightful to see her engaging with the classroom. Our son loves going to school and has no anxieties about it at all, which is a massive change from his first year in public education."

The RCP arranged to surprise Hayley in her classroom in the last week of school with a beautiful bouquet of flowers put together by Nichola and her team at the Flower Room, an Inter Flora Top 20 Club member. Hayley also received a voucher for two at the Grand Irish Pub.



Hayley Addenbrooke with some of her students at Mosston School

## 1/2 PRICE SALE

Men's and Women's Clothing & Shoes

Sale ends 20/12/19

*Re-dress*  
Pre-loved clothing

61 Ridgway Street, Wanganui. Ph 06 348 7939



Whanganui River travel  
as it used to be, with  
New Zealand's only  
coal fired paddle steamer.

1a Taupo Quay  
Whanganui  
info@waimarie.co.nz  
347 1863

## New Year's Day Celebration Cruise for Whanganui Families - Special Offer

Come aboard for a one hour cruise on New Year's Day  
at the special offer of \$45 for a family of four.

This is part of our celebrations of the 20th Anniversary  
of the relaunch of the Paddle Steamer Waimarie.

Entertainment for the kids included.

The Waimarie leaves at 2pm. Book at the Riverboat  
Centre in person or by phoning 347 1863.

If your family is smaller - it is \$35 for a family of two.

There will also be a scheduled two hour cruise at 11am.



www.waimarie.co.nz

# Jude has skied all over the world



Jude Hamblin skiing in Kazakhstan

Jude Hamblin was brought up in Palmerston North with glimpses of Ruapehu glittering on the horizon – but no one in her family skied. But she got the bug through school ski trips, which has led her on a journey to ski in a wide variety of countries across Central Asia and Eastern Europe.

It didn't happen for some time as she damaged her knee skiing in her early 20s and had to have it operated on several times. However, her love for the sport and the mountains drew her back in to the point of leaving her full-time office job to become a custodian of a ski lodge at Whakapapa for nine seasons.

While she had gone overseas before, cycling through Vietnam, she first went skiing in another country in 2007 when she visited Japan. That was followed by a trip to British Columbia in Canada and a return to Japan to run a ski lodge in Hokkaido in 2010/11.

Around that time a friend suggested a skiing trip to Russia, Iran and Romania. She agreed and to make the trip more enjoyable she learnt some Russian. They skied in Sochi, Russia, before the 2014 Winter Olympics were held there. She says, "I loved the Russian onion-domed churches and the 'Dr Zhivago' atmosphere of the snowy Russian landscape".

Iran was "very hospitable with people often wanting to help us as tourists". They did their skiing at Dizin - a favourite resort of the late Shah of Iran. Jude describes Romania as, "Like in the movie *Namnia* with fairy tale houses and snow on the trees."

In 2013 it was the Silk Road starting from the Istanbul end and then skiing in the 'Stans' – Kyrgyzstan, Kazakhstan and Uzbekistan. At this point you probably need a world map in front of you. She says, "Some of the skiing facilities were rudimentary and you needed to take all your equipment with you." At some ski fields you had to pay per lift "and because of hyper-inflation you had to carry wads of bank notes with you."

Some of the skiing was 'mixed' – with quad bikes and horse riding sharing the ski piste, not to mention "Young men with their shirts off drinking vodka."

They went to Georgia and Armenia on the same trip, which Jude found to be "ancient, charming with orthodox churches a change from the minarets of Central Asia."

It didn't take Jude long to go back skiing in Japan and then in 2017 to Kurdistan, which is a self-governing part of Iraq. She says, "We were able to join a commercial ski tour company specialising in trips to unusual destinations." As ISIS was active in the area at the time, she had to search world-wide for specialist insurance to cover her "for terrorism, kidnapping while also providing cover for medical evacuation as we were ski touring in the backcountry."

Earlier this year she was in the Caucasus region again, including Azerbaijan which had recently built a state-of-the-art ski centre with man-made snow to attract tourists. She says, "We stayed with a farming family in a nearby village which was a contrast to the very luxurious resort next door."

As for 2020, she is thinking of going back to Iran and possibly to Turkmenistan and Tajikistan on a non-skiing trip where she can take in other aspects of the countries.

Jude adds, "The physicality of skiing, the pristine environment and the camaraderie of people with a common passion keeps me skiing."

"I've skied all around the world – from Kurdistan to Kyrgyzstan, but I always come home to Ruapehu."

**Copyright:** River City Press produces and/or publishes advertisements strictly on the basis that River City Press is entitled to and owns the copyright in the advertisement so far as the copyright relates to publication or reproduction for publication in any newspaper, magazine or similar periodical or to broadcasting of the advertisement.



# Zonta says no to domestic violence



'If you want to go fast, go alone; if you want to go far, go together.' African proverb.

The Zonta Club of Whanganui wish everyone a joyful and safe Christmas and New Year. This season can be so stressful for many people and as the stress weighs more and more heavily it can turn to frustration and anger.

Every year we hear the awful statistics concerning domestic violence - but quoting numbers is not helping. Even stories raise our sympathy but are forgotten except for those who have lived through the experience, victims and perpetrators, women, men and children.

Recent research among children tells us they want:

- A relaxed and loving time with the family.
- Realistic expectations about gifts. Manage their

expectations and prevent disappointment by alerting them to what "Santa" can afford.

- Start your Christmas season late.
- It is not the gifts the children remember. Children remember what they did as a family.

We are all children at heart. We all want quality times with loved ones, not to be disappointed, family events, traditions, not to be left alone or taken away.

Most of you reading this are not the folks that need to be reached. However, YOU can reach out to those folks by saying NO to Violence and providing hope to those women, children and men, not just at Christmas but all through the year.

By passing on this message to Whanganui (for a start) through the wonderful, creative ways, that Whanganui people are so good at. By support-

ing service clubs such as Zonta and non-government agencies. By leading the rest of New Zealand in the reduction of family violence. It only takes one small step at a time.

- Dr Gillian White - On behalf of Zonta Club of Whanganui

## Golf results

### Tawhero 9 Hole Golf Results 10/12/19

Munro Rosebowl Stableford Rd 2: **Division 1 Combined:** Sam McGregor 23 on c/b from Ray Rahui, Joan Shore 21 on c/b from Dave Johnston, Kaye How 18.

**Division 2 Combined:** Brian Quinn 23, Patrick O'Leary 22, Geoff Clark 21 on c/b from Jean Walsh.

**Two:** Sam McGregor - 7th Hole.

# Labour Party annual conference in Whanganui - "Friendliest, most welcoming conference"

The Labour Party hosted its Annual Conference in Whanganui for the first time on the last weekend of November.

"We pitched for the conference to be held in Whanganui as an opportunity to show Labour's commitment to regional communities and by showcasing the opportunities and facilities available in New Zealand's most beautiful city," said Steph Lewis, the Labour Party's candidate for Whanganui.

A huge amount of work went into pulling together the bid by local members including then LEC Chair, Tim Easton and by Whanganui & Partners. Steph says, "There was also a considerable amount of lobbying that went into it at the last annual conference in Dunedin." Mayor Hamish McDouall also made a presentation. "The conference has been a great economic boost to our community, says Steph. "Bringing the conference to Whanganui was estimated by Whanganui and Partners as likely to deliver an economic benefit to the community of



Labour Party Annual Conference held in Whanganui recently. Photo courtesy of Frank Gibson

\$500,000."

Hosting the Conference took a huge amount of work involving local party volunteers, Adrian Rurawhe, MP for Te Tai Hauāuru, which includes Whanganui, local Te Tai Hauāuru members, and Labour Head Office. A large number of local organisations were also involved including Whanganui & Partners, Whanganui Events, Maori Wardens, Police, Neville Gorrie from the Grand Hotel, Heritage

Food Crops Research Trust, Mint Cafe, Essence Catering, Seth Hapu and local dance crew, Aotea Empire, who performed for the crowd in the Royal Wanganui Opera House."

The Conference was a great success with 630 delegates attending and 375 attending the fundraiser dinner for the Whanganui LEC.

Looking back Steph says, "The feedback I have received on the conference has been

100% positive. People have described Whanganui as 'beautiful' and a 'hidden gem'. Many long time party members have commented that this was the friendliest, most welcoming Conference they had ever attended - even members of the public passing them in the street went out of their way to make them feel welcome. One commented they had never felt so looked after by the host city."

# Spice Guru

## INDIAN RESTAURANT & BAR

### BOOK YOUR

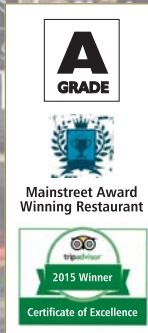
### CHRISTMAS FUNCTION TODAY!

- Set Menu
- Large parties catering for up to 100 people
- Beer from \$5.50
- Wine from \$5.99 / glass
- Wine from \$23.99 / bottle

23A Victoria Avenue, Bridge Block, Opposite Embassy 3 Cinema, Wanganui

Phone orders on 06 348 4851

Takeaways and delivery available - BOOK ONLINE - [www.spiceguru.co.nz](http://www.spiceguru.co.nz)





# Christmas NEWS



## Local walks and tramps around the area

Weather in Whanganui is generally good over summer, but take water, sun protection and a jacket no matter what.

**Five key steps will help keep you safe outdoors:**  
\* Plan Your Trip \* Tell Someone Your Plans \* Be Aware of the Weather \* Know Your Limits \* Take Sufficient Supplies.

These steps make up the Outdoor Safety Code. This code applies to all outdoor activities regardless of the level of intensity. Each of

these steps can help you to be prepared for what you might encounter in the outdoors.

Get heaps of important tips, including more information about each of the steps in the Outdoor Safety Code, in the MSC Get Outdoors video series. #MakeltHomeNZ

**Whanganui area walks/tramps:**

\* Bushy Park: Great young family day out in the bush, it's an eco-sanctuary - <http://www.bushypark->

[sanctuary.org.nz/](http://www.sanctuary.org.nz/)

\* Waitahinga Trails: Kid friendly walking tracks - <http://www.waitotara.co.nz/waitahinga.htm>

\* Atene Skyline Track: Is a great trip, wear good footwear, there's a few steep areas and check the track conditions to see if it's open before you go. Not recommended for small children. Take a jacket for exposed areas. There might not be cellphone reception in some parts so tell someone your plans.

\* Any tracks or adventures near the Whanganui River - Always take a jacket as the weather changes up the river

\* Araheke Mountain Bike Park - Awesome lake to look at, only grade 2 so a brilliant place to get out for a ride - <http://www.wanganui-mountainbikeclub.co.nz/lake-wiritoa/>

\* Virginia Lake is good for the kids to get out

\* Kai Iwi Beach - at low tide you can do this walk along the beach - <https://www.visitwhanganui.nz/walking-and-cycling-in-whanganui/>

\* Atene skyline trail.

Plus more tracks here: Walks on Walking Access Commission -

<https://www.walkingaccess.govt.nz/find-my-adventure/#/region/manawatu-wanganui>

- Terri Rosenstock, NZ Mountain Safety Council



**Waitahinga dam -** For an ideal day walk, take the Okehu ridge trail that leaves from the big signpost.

Have a snack at Croppers Clearing then take Tom's track down to the Waitahinga Dam. Have lunch here, then head back along Harry's track until you hit the Okehu ridge track again. You can choose to follow this all the way back to the car park, or partway along it, take the Pines' trail. This takes you to the Quarry Road and past the entrance to the Chicken Run trail as you return to the car park

## Birthright will be distributing gifts to children of solo parents/carers

Each year Birthright appeals to the public to donate new, unwrapped gifts for children aged from babies to 12 years of age. These can be left at the Birthright office at 244 Victoria Ave or at the Whanganui Chronicle. Birthright says, "We are getting a good response, including from businesses." The final date for bringing them in is Thursday, December 12.

Birthright has asked its clients - the parents/carer - to register their children and to suggest what the children are interested in. Birthright staff also know the children and can work out what would appeal, whether it is a unicorn or a Barbie.

The parents/carers will come in on Thursday/Friday, December 17/18 to collect their bags, wrap the presents up at home

and give them out on Christmas Day.

Birthright tries to include an outdoor family game in the package and also a book for the children.

Any surplus durable presents can be stored but limited life items such as

bubbles and play dough will be given out.

This year 112 children will be receiving

Christmas gifts from a generous Whanganui community through Birthright.



*Wishing all our readers and advertisers a very Merry Christmas*

*Holiday Greetings*

We wish all our clients a Merry Christmas and a Happy New Year

**Our offices will be closed from 5pm Friday 20 Dec, 2019 & will re-open on Tuesday 14 Jan, 2020**

**PARKER MAZENGARB**

**Barristers and Solicitors**

Professionals who care for you and your family  
34 Ridgway Street, Whanganui  
Phone (06) 345 3956



**COME FLYING WITH US!**

**THE SKY IS NOT THE LIMIT!**

**FLIGHT VOUCHERS AVAILABLE**

Experience flying with our introductory trial flight from only \$95 or for \$125 bring two friends!

**GIFT VOUCHERS AVAILABLE FOR CHRISTMAS**

See our website for more information.

**Ph: 06 345 0914**

**[www.wanganuiaeroclub.co.nz](http://www.wanganuiaeroclub.co.nz)**



**Age Concern Christmas/New Year Hours**

Age Concern Whanganui will be closed from midday

**Friday 20<sup>th</sup> December 2019**

re-opening on

**Monday 6<sup>th</sup> January 2020 at 9am**

To contact the Elder Abuse Response Service over the Christmas period please ring **0800 326 6865**

The Transport & Supermarket Service will not be available until after 6<sup>th</sup> January.

Age Concern Whanganui Board and Staff wish you a very Merry Christmas and festive New Year

**EASTSIDE DAIRY**

**Merry Christmas from the team at Eastside Dairy**

<b>Sunny Day &amp; Irvines Pies</b> 2 for \$3.70	<b>Cow &amp; Gate</b> 2ltr Milk 2 for \$7
<b>Sliced Fresh Ham &amp; Luncheon</b>	<b>110 Containers of loose sweets</b>
<b>Rivermill Bread</b> 3 for \$5.50	<b>Novelty Choc Bars</b> \$1.50 King Size \$2

**OPEN 7 DAYS**  
5.30am - 9.00pm

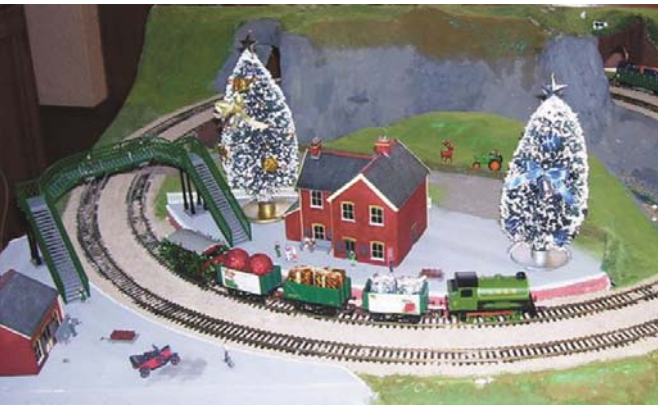
**63 Jones St, Wanganui East  
Phone 343 9598**



# Christmas NEWS



## Model Railway Christmas show this weekend



Model railway Christmas theme

The Wanganui Model Railway & Engineering Society is having a Christmas show from Friday, December 13 from 6pm to 9pm and on

Saturday and Sunday, December 14/15 from 1pm to 4pm. It is at their clubrooms, 70a Alma Road and entry is only \$2. The clubrooms have a

large permanent layout and at the show four or five locomotives will be operating simultaneously, while there will be another six or seven smaller systems also operating. The layouts will be Christmas themed. There will also be a display of model engineering items. Membership of the club is around 24 with about eight "real keen types, full time," said spokesperson Paul, who is probably one of those. To get involved in model railways, you can start budget wise with up to \$200 for a locomotive but if your passion for model railways gets away with you, "you could pay tens of thousands of." Some enthusiasts build their own locomotives. The youngest member is 10 or 11, but he does have the advantage of being the nephew of the former president. However, the fascination for model railways covers all age groups.

## Does your dog want a photo with Santa?

Santa with policeman, Caleb and his dog



Trafalgar Centre is offering the chance for your dog, and perhaps yourself, to have a photo with Santa. So far the offer has been the biggest hit on their Facebook. Someone is even coming from Palmerston North with their dog. It was available only on one evening, last night - at this stage. However, if there is enough interest, another night will be held.

You need to phone Annette on 027 251 9302 to make your booking. Photos are priced from \$30.

However, if you don't have a dog, or prefer to have your children have their photo taken with Santa, there are many more opportunities. Annette will start taking photos from Saturday, December 14 through to December 24, but she says "the earlier you come in the better." No appointments necessary and it doesn't take long. Check the Trafalgar Centre Facebook for more details. Prices start at \$10 for a 6 by 4.

**Tade**  
Traditional Thai Massage  
for good health

Neck & Shoulder Massage **\$20** (15 min)  
Thai Traditional Massage **\$60** (1 hour)  
Thai Oil Massage **\$70** (1 hour)  
Foot Massage **\$60** (1 hour)

**Christmas gift vouchers available**

Monday - Saturday 9.30am - 6.30pm  
64 Guyton Street, Wanganui. Phone 348 8466

**LARSEN**  
COLLISION REPAIRS LTD

Aaron, Melissa and the team wish you all a happy & safe Christmas!

We will be closed from **TUESDAY 24 DECEMBER** and will reopen **MONDAY 6 JANUARY**

77 Taupo Quay (next to BP) Ph 345 3377  
www.larsencollision.co.nz

ICAT mta Repair A Gold Class

Season's Greetings from the team at **Harrison's HireMaster**

24 Dec 7.30am to 12 noon  
25 Dec Closed  
26 Dec Closed  
27 Dec Normal Hours Resume  
01 Jan Closed  
02 Jan Closed  
03 Jan Normal Hours Resume

**Christmas New Year Hours**

**HARRISON'S HireMaster WANGANUI**  
26 CHURTON STREET PH 345 7017  
www.hiremasterwanganui.co.nz

**CLUB metro** 13 Ridgway Street, Wanganui  
349 0149  
RESTAURANT | BAR | GAMING

**Saturday Night Special**  
**50% off a second meal**  
T's & C's apply

AMALGAMATION OF WANGANUI  
**RSA** + **Wanganui Cosmopolitan Club**  
Members and Bona fide Guests Welcome

**2019/2020 Christmas/New Year Hours**

CLUB	11.00am - Close
Xmas Eve (Tues 24 <sup>th</sup> Dec)	CLOSED
Christmas Day (Weds 25 <sup>th</sup> Dec)	2pm - 7pm
Boxing Day (Thur 26 <sup>th</sup> Dec)	11.00am - Close
Fri 27 <sup>th</sup> Dec - Mon 30 <sup>th</sup> Dec	11.00am - 9pm
New Years Eve (Tues 31 <sup>st</sup> Dec)	2pm - 7pm
New Years Day (Weds 1 <sup>st</sup> Jan)	2pm - 7pm
Thurs 2 <sup>nd</sup> Jan	11.00am - Close
Fri 3 <sup>rd</sup> Jan onwards	11.00am - Close

RESTAURANT	11.00am - Close
Xmas Eve (Tues 24 <sup>th</sup> Dec)	CLOSED
Christmas Day (Weds 25 <sup>th</sup> Dec)	CLOSED
Boxing Day (Thur 26 <sup>th</sup> Dec)	11.00am - Close
Fri 27 <sup>th</sup> Dec & Sat 28 <sup>th</sup> Dec	CLOSED
Sun 29 <sup>th</sup> & Mon 30 <sup>th</sup> Dec	5.30pm - 8.00pm
New Years Eve (Tues 31 <sup>st</sup> Dec)	CLOSED
New Years Day (Weds 1 <sup>st</sup> Jan)	CLOSED
Thurs 2 <sup>nd</sup> Jan	11.00am - Close
Fri 3 <sup>rd</sup> Jan onwards	11.00am - Close

COURTESY VAN	4pm - 8pm
Xmas Eve (Tues 24 <sup>th</sup> Dec)	NO VAN
Christmas Day & Boxing Day	11.00am - Close
Fri 27 <sup>th</sup> Dec & Sat 28 <sup>th</sup> Dec	NO VAN
Sun 29 <sup>th</sup> & Mon 30 <sup>th</sup> Dec	3.00pm - 9.30pm
New Years Eve (Tues 31 <sup>st</sup> Dec)	NO VAN
New Years Day & 2 <sup>nd</sup> Jan	11.00am - Close
Fri 3 <sup>rd</sup> Jan onwards	11.00am - Close



# Christmas NEWS



## RSA's Women Section celebrates with Christmas morning tea



The Women's Section of the RSA has been operating since 1942, meeting once a month. On Wednesday, December 11 they celebrated at Club Metro with a Christmas morning tea complete with Christmas cake as well as entertainment. President, Elaine Loveridge says, "It is a friendship activity and newcomers are always welcome." You can contact her on 345 8090.



**Alzheimers Whanganui**

### CHRISTMAS CLOSURE

Alzheimers Whanganui office will be closed from **Thursday 19th December, 2019** reopening on **Monday 6th January, 2020**

We would like to wish the Whanganui Community a very Merry Christmas and a Happy New Year and thank them for their support throughout the year.

For support please phone  
**0800 004 001**



## Operation Shoebox provides Christmas gifts through Jigsaw

Brent and Maria Lawless were introduced to the idea of 'Operation Shoebox' by a friend and after helping her set it up four years ago, have been doing it ever since.

It works as follows: You buy a new present, wrap it up, fill in details of age/sex etc. on a label available at Wanganui Toyota, Guyton Street and leave them there by 13 December. You can arrange for the present to be picked up. You can also get gift idea sheets in case you are not too sure.

The presents will be handed over to Jigsaw Whanganui and they will distribute them to their clients and their families. Brent says, "We chose Jigsaw because they work with families as a unit."

You can also donate cash. Brent and Maria will go out and buy presents with the money and add them to the collection. Last year donations covered 40 shoeboxes of presents. Companies can get involved and if they donate 10 or more, their logo will be added onto a flyer. Brent said, "A woman came in from Central Baptist with 30 boxes."

As for the shoeboxes – most of them were donated by Footloose and Posh Comfort.

Last year the goal was to fill 200 boxes – they finished with 261. Brent and Maria would love a similar result this year.



Some of the filled shoe boxes at Toyota.

### Belmont Boarding Kennels, Dog Day Care, Cattery & Dog Grooming Service

*A Happy & Safe Christmas & New Year to you all.*

185 Mosston Road  
Wanganui

Phone  
**06 344 4010**

Email  
omeishan@xtra.co.nz



### CITY MISSION CHRISTMAS DAY MEAL 2019

**Wanganui Racecourse Eulogy Lounge**

Purnell St, Whanganui  
12noon, Christmas Day

**NO DOOR SALES**

**Tickets available from:**

City Mission, 7 Park Place  
Monday - Friday, 9am - 3pm

Zest for Mission Shop, 163 Victoria Avenue

**\$5.00 per adult**

**\$3.00 per child (6-12 yrs)**

**FREE for children 5yrs & under**



**KATE JOBLIN & CO LTD**  
CHARTERED ACCOUNTANTS

*Seasons Greetings to our clients*

*Thank you for your support throughout 2019.*

*We wish you a happy, peaceful Christmas and a prosperous New Year.*

Our office reopens  
**WEDNESDAY 15 JANUARY 2020**



10 Wicksteed Terrace  
PO Box 7070, Whanganui 4541  
T: 06 348 7000  
E: hub@teamkj.nz



## Only 1 more paper until Christmas!

*Book your advertising now.*  
**River City Press**  
rivercitypress@xtra.co.nz  
Ph. 345 3666

**Order your Christmas goodies early.**

- \* STRAWBERRY FLANS
- \* CHRISTMAS MINCE PIES
- \* CAKES
- \* CHOCOLATE LOGS
- \* GATEAUS

**Savages Bakery**  
127 Duncan Street, Phone 343 9488  
5am-5.30pm Mon-Fri, 7am-1.30pm Saturday

**Savages Hilltop Bakery**  
(Next to St Johns Pharmacy)  
7am-3.30pm Mon-Fri, 8am-1.30pm Saturday

**Savages Moana Street**  
73 Moana Street, Phone 343 2057

**Terry Arbuckle**  
REMEDIAL MASSAGE THERAPIST & EXERCISE CONSULTANT

**Remedial Therapeutic Massage Therapy**

- Sport, Work & Lifestyle 'Soft Tissue' Pain Relief
- Back Pain Help - Deal with Posture Pain

**Specialised 'Corrective' Exercise**

- Individualised for you needs - Muscle Balance
- Posture Correction & Chronic Pain addressed

**Ph 027 205 6520 or 06 345 5496**  
terryarbuckle@xtra.co.nz  
Clinic at Inspire Health & Fitness Centre, Wanganui

*Wishing you a very Merry Christmas and Happy New Year*



# Christmas NEWS



## Retirement home celebrates with own Christmas Parade

Kowhainui's annual Christmas Parade must be a highlight of the season for many residents, staff and participants, judging by all the work that goes into costumes and Christmas items.

The Parade is always led by a trumpet player and this year a resident in her mobility vehicle dressed up in Christmas colours, also led. The children from the nearby Montessori pre-school come next suitably dressed and excited,

followed by Whanganui Ballet & Dance Academy students dressed up 'differently.' Josh Chandall-MacKay was there but would also have been well placed in an Irish Christmas Parade.

Apart from staff and residents there was also Fire Service personnel and a group of well-behaved and friendly dogs.

Other residents lined the corridors to cheer on the parade and all of them were treated to a sausage sizzle and refreshments.



Councillor Josh Chandall-MacKay getting into the spirit of Christmas



Brass Wanganui trumpet player leads the parade along with a resident

## Temporary service change: Taihape to Whanganui

Horizons Regional Council's bus service from Taihape to Whanganui will temporarily operate on Fridays rather than Thursdays commencing from 3 January 2019.

Horizons Transport Manager, Phil Hindrup, says the altered service is a result of the public holidays in January and February falling on Thursdays respectively.

"The January service will now run on Friday the 3rd in lieu of Thursday the 2nd, the day after New Year's day. The February service will now run on Friday the 7th in lieu of Thursday 6th, which is Waitangi Day.

Mr Hindrup says with the two public holidays falling on a Thursday, it would have translated into two months without the Taihape to Whanganui service.

"This temporary

service change will run for two months only - ending in March 2020. The Taihape to Palmerston North service will remain unaffected by this change. We would like to apologise in advance to anyone who is inconvenienced by these service changes."

Bus notices and timetables for the service can be found at [www.horizons.govt.nz](http://www.horizons.govt.nz).

**RIVER CITY PRESS will be CLOSED from**  
**THURSDAY 19 DECEMBER**  
**and we will REOPEN on**  
**MONDAY 13 JANUARY 2020**



Like us on  
Facebook



Cnr Wicksteed & Ingestre Streets, Wanganui  
[www.rivercitypress.co.nz](http://www.rivercitypress.co.nz)

**MAKE 2020  
THEIR BEST  
YEAR YET**



**Merry Christmas and Happy New Year!**

We are closing on Friday 13th December.  
We will open again on Monday 27th January, 2020.



**Boost your child's success, self esteem and confidence in English and maths with a personalised learning programme**

**Kip McGrath™ EDUCATION CENTRES**

28 Somerset Road, Springvale, Whanganui  
Phone 06 348 0035 • [www.kipmcgrath.co.nz](http://www.kipmcgrath.co.nz)

**EAR HEALTH**  
PROFESSIONAL EAR CARE

*Wishing our clients a  
Happy & Safe Christmas!*

**Ear Health Nurse**  
**Sheryl Ferguson**

Offering assistance for ear problems in adults and children, glue ear, runny ears and itchy ears.

Removal of wax by suction.

A much kinder and safer method of removing wax.

For adults and children.

The only acceptable method for tinnitus sufferers.

For an appointment please phone **06 348 7980**

**Season's Greetings  
from the team  
at Air Wanganui.**

We would like to acknowledge your local flight nurse team who work alongside our pilots to ensure members of our community get the best care possible.



**Proud to be your  
local Air Ambulance service.**

Office 06 348 9210 Phone 0800 200 290  
[www.airwanganui.co.nz](http://www.airwanganui.co.nz)

**LOADERS**  
WANGANUI

[www.loaders.co.nz](http://www.loaders.co.nz)

**Merry Christmas  
and a  
Happy New Year**

- Drainage • Roading
- Earthworks
- Traffic Management
- Hydro Excavation
- Machinery Hire & Transport

06 348 9034 [info@loaders.co.nz](mailto:info@loaders.co.nz)



**CIVIL ENGINEERING • EARTHMOVING CONTRACTORS**







# CARING FOR THE ELDERLY THIS CHRISTMAS



## Caring for our seniors these holidays

There is a lot of pressure on people to enjoy themselves during the holidays. The reality, however, is that many people feel increasingly isolated and unhappy during this season of goodwill and elders can have an especially hard time.

While aging can bring wisdom and experience, there are inevitable losses that even the healthiest seniors face. Loved ones and friends fall ill and pass away. Energy and mobility levels often decrease, resulting in feelings of lost independence and opportunities. Neighborhoods change over time, leaving even those well enough

to remain in their own homes feeling lonely. The focus on family, friends and togetherness during this time of year can actually bring melancholy feelings to the forefront.

If you believe that your parent, spouse, friend or neighbor may be depressed, there are steps that you can take to help lift their spirits. You are probably busy with your own holiday preparations, but it's important to remember what the holiday season is truly about. Simplifying some of your plans will allow you to focus on what really matters: the important people in your life. Use these ideas to brighten up a loved one's holiday season.

### Tips to Enhance a Senior's Holiday Experience:

1. Make a point of actively listening when they want to talk, even if the discussion is negative. An honest and empathetic conversation can help them process what is bothering them, whether they are mourning a loss or coming to terms with new challenges in their life. It may also reveal why they are feeling down and help you devise other ways to lift their spirits.
2. Remind them how important they are as a part of your life, your family members' lives and these annual holiday celebrations. They may



feel useless or burdensome if they cannot contribute to, or fully participate in the festivities like they used to. Encourage them to do what they are capable of and be especially careful not to act like what you do for them is a duty. Show them they are loved.

3. If a senior is in a long-term care facility, check with the activities director and local schools or extracurricular programs to see if they can arrange for children to visit with, or even perform, for the residents. New activities and interactions with younger generations can be very uplifting for an elder who is in physical or emotional pain. If possible, take the senior out to school programs and games, especially if they feature younger family members.

4. Cook traditional baked goods or treats with

your loved one, if possible. If they reside in an assisted living facility or nursing home, bring treats on your visits for your elder to enjoy and share with their friends.

## Are you a little lonely?

Are you feeling that you spend too much time on your own? Maybe you can't get out much these days and would enjoy company, a chance to chat and share an interest? Are you also over 65, unable to drive, living alone, without local family and with frail health?

Age Concern Whanganui has an Accredited Visiting Service. The service has caring volunteers who are keen to spend time with an older person. Many of them are older

people. The most important thing you can do with a senior to make them feel loved and included this season, is to spend time with them. Look at family photos, watch home vid-

eos or holiday movies, listen to seasonal music, or do crafts together. Regardless of what you decide to do together, any time you can spare is a precious gift.

### Welcome to MASONIC COURT REST HOME



#### What makes Masonic Court Rest Home so special?

- No premiums charged on any rooms, including ensuite rooms.
- Beautifully kept expansive and sunny gardens.
- Recreational activities offered seven days a week by qualified Diversional Therapists.
- Day activity programmes for our community.
- Home cooked, bountiful, delicious meals using local produce.
- And most of all, the people here!

**Masonic Court** *Care you can trust*

 1 Masonic Dr, Wanganui East 4500 • Ph: 06 343 9091  
www.masonicvillage.nz



### ST JOHNS HILL Healthcare

WE INVITE YOU TO COME AND INSPECT OUR FACILITY

Hospital, Rest Home & Respite Care. Enquire Now.  
Beautiful relaxing gardens and stunning views make choosing St Johns Hill Healthcare the ideal choice for your loved one.

*Wishing you all a  
Safe & Happy Christmas*



Enquiries phone 06 348 1500  
2 Virginia Rd • St Johns Hill • Wanganui  
sue.walker@stjohnshillhealthcare.co.nz



### Driving Miss Daisy Whanganui

Driving Miss Daisy is NZ's number 1 friendly and reliable companion driving service.

Driving Miss Daisy can help with:

- School pick up/drop off
- Clients with special needs
- Appointments while rehabilitating
- Any outing you may choose!
- Wheelchair Accessibility

ACC registered vendor.

Total Mobility Cards accepted.

Bookings are essential. Call Clive today.

Ph: (06) 347 9100

Mob: 021 503 313

Email: whanganui@drivingmissdaisy.co.nz



Driving Miss Daisy

### River City Cabs 1996 Ltd

Book your next taxi with

**smarHAIL** 

Download the app on your phone NOW!



**VANS - MOBILITY - SEDANS  
HYBRIDS - LUGGAGE TRAILER  
CHILD CAR SEATS**

**PH: 0800 345 3333**  
12 Hardy Street, Wanganui



# Marton Country Music Festival anticipated to be 'the best one yet'

If you are a country music fan or just a live music fan, the Marton Country Music Festival is the must-see event of the summer. The festival will be taking place from 17 to 19 January at Sir James Wilson Park in Marton and this year is set to be the best to date.

Currently in its 16th year, the festival has grown from strength to strength and is now one of the most anticipated Country events around and a huge event for Marton and the Rangitikei District.

The Festival is a non-profit event run for community purposes to encourage and promote Country Music and local artists, as well as family participation. It is an event which is attended by all age groups and ethnicities. The organisers and helpers are all volunteers. It is a top of the line event with a very professional presentation.

People arrive from all over New Zealand and the world. A very large contingent of Motor Homers make it a very important event on their calendar for the year. The event brings many people to Marton and the surrounding area.

The festival will once



Part of the crowd at last year's event

again feature a stellar line-up of artists, with this year being a very special New Zealand Showcase line up.

Marian Burns is one of New Zealand's most iconic entertainers, having shared the stage with the likes of Ricky Skaggs and The Topp Twins. She has played to audiences numbering over 100,000 at Coca Cola's Christmas in the Park. Marian has recently been named as an Awarded Member of the New Zealand Order of Merit for her services to Music.

Coopers Run is one of the main acts this year - Coopers Run were the very first Kiwi's to appear

on the Country Music Association's Global Artist Party in Nashville Tennessee! The event was viewed by over 40 million people and they were backed by legendary singer/songwriter, Pam Tillis' band.

Coopers Run have opened for Glen Campbell, Grammy award winning, Lady, Kenny Rogers, LeAnn Rimes & Scotty McCreery. The pair is two time NCMA Duo-Group of the year. They have completed their first international tour in June last year.

The Festival is a great chance to experience the strongest voices in the New Zealand Country

Music scene and beyond. There's open mic sessions, singalongs and more, so bring the kids for some good family and community fun!

The Marton Country Music Festival is a friendly and welcoming event for all music lovers; it is a gathering of country music enthusiasts to share a weekend listening to and enjoying live country music.

As we move to our 16th year the enthusiasm grows even larger. See you there! - More information and a list of Artists can be found at <http://martonfestival.nz>.

- John de Burgh  
Keeping it all Country!

# Calling young artists for free mural workshop in January



The Sculpture Garden at the WRRC

The Whanganui Resource Recovery Centre is calling for keen young artists (9 years and over), who would like to create murals of local iconic buildings, to join a mural workshop.

This is a chance to join artist, Esther Topfer, at the Whanganui Resource Recovery Centre (WRRC) during the week 6th to 10th January, from 10.30am to 2.30pm daily.

This January workshop follows a very

successful workshop held in July, during which young artists created art works for the Sculpture Garden at the WRRC. Both workshops have been funded by grants from Whanganui Creative Communities.

January workshop attendees will make large murals to brighten up the fence, using bottle tops, bamboo and other repurposed resources.

For further details and to register phone Esther on 022 523 4987.

## AMERICA Nails

NAILS • EYEBROW MICROBLADING  
WAXING & MORE SERVICES

NEWEST PRODUCT  
SNS DIPPING POWDER

Contains Vitamin C & Calcium  
Maintain Healthy Strong Nails  
Lasts 3-4 weeks



### DETOX PEDICURE

From the Dead Sea, the lowest point of the earth  
26 minerals - Amazing for your health & skin - Paraben free  
Safe - Allergy Tested - Cruelty Free - Doctor Recommended

SEACRET™  
MINERALS FROM THE DEAD SEA

### CHRISTMAS HOURS

Saturday	14 Dec	9am - 6pm	Saturday	21 Dec	8am - 8pm
Sunday	15 Dec	10am - 4pm	Sunday	22 Dec	8am - 8pm
Monday	16 Dec	9am - 7pm	Monday	23 Dec	8am - 6pm
Tuesday	17 Dec	9am - 7pm	Tuesday	24 Dec	8am - 7pm
Wednesday	18 Dec	9am - 7pm	Wednesday	25 Dec	CLOSED
Thursday	19 Dec	9am - 7pm	Thursday	26 Dec	9am - 6pm
Friday	20 Dec	9am - 8pm	Friday	27 Dec	Normal Hours

136 Victoria Avenue.  
Phone 06 347 2909

Walk-ins Welcome

## WANGANUI LUXURY NAILS

Come - Relax - Enjoy



Walk  
ins  
Welcome

### CHRISTMAS HOURS

Saturday	14 Dec	9am - 6pm	Saturday	21 Dec	8am - 8pm
Sunday	15 Dec	10am - 4pm	Sunday	22 Dec	8am - 8pm
Monday	16 Dec	9am - 7pm	Monday	23 Dec	8am - 6pm
Tuesday	17 Dec	9am - 7pm	Tuesday	24 Dec	8am - 7pm
Wednesday	18 Dec	9am - 7pm	Wednesday	25 Dec	CLOSED
Thursday	19 Dec	9am - 7pm	Thursday	26 Dec	9am - 6pm
Friday	20 Dec	9am - 8pm	Friday	27 Dec	Normal Hours

73 Victoria Avenue, Wanganui. Phone 06 345 6868



Find us on  
Facebook Wanganui Luxury Nails



# SPECIALISED SERVICES

## River City Golf at Tawhero making steady progress

Ray and Bonnie bought the River City Golf Course at Tawhero

nearly 18 months ago and have made steady progress in bringing it

up to a high standard.

A big problem is the Cape Daisy weed. Ray says, "We sprayed it before summer and got it under control but it loves warm, wet, damp conditions and has come back. So we are spraying

it monthly."

The shop is now full of stock with golf clubs and accessories. The old hire sets have been sold off and replaced with better quality sets. The greens equipment has also been upgraded and

there is a new fairway mower. The driving range has received their attention as well with new mats and a general fresh up.

The owners have implemented a 9-hole soccer golf layout and have

reasonably priced green fee summer memberships available.

Ray found an old sign from the days when the course was a council owned facility. He has restored it and hung it up at the entrance to the shop.

Prices have remained the same with only a

small increase for the 18-hole group of players.

It has been hard work with both Ray and Bonnie working seven days a week. But the satisfaction of an improving golf course and the positive feedback received from everyone has made it worthwhile.

**Only 1 more paper until Christmas!**

Book your advertising now - River City Press  
email: [rivercitypress@xtra.co.nz](mailto:rivercitypress@xtra.co.nz)  
Ph. 345 3666

### GOLF

**RIVERCITY GOLF**

Tawhero Golf Course

**DRIVING RANGE OPEN TO THE PUBLIC**

Call in and have a look at our great course.

Phone 344 5808  
24 York Street, Wanganui



Ray, owner of River City Golf

### STAFF AVAILABLE



**Providing Staffing Solutions**

- Permanent
- Contract
- Temporary
- Human Resources
- CV & Interview Preparation

[www.actionpersonnel.co.nz](http://www.actionpersonnel.co.nz)  
Suite 5, 212 Wicksteed St,  
Whanganui  
Phone 06 355 4354



### PLUMBING/GAS



- ▷ Plumbing
- ▷ Gasfitting
- ▷ Drainlaying
- ▷ Roofing
- ▷ Central Heating



Considering a central heating system?  
Call for your free quote.  
Accredited Radiator and under-floor installers

Daryl Taylor  
Certified Plumber, Gasfitter & Drainlayer  
027 466 9808 or 06 392 8014  
[daryl@taylorplumbing.co.nz](mailto:daryl@taylorplumbing.co.nz)

[www.taylorplumbing.co.nz](http://www.taylorplumbing.co.nz)



### CREMATE A PET

**Cremate-a-Mate**  
Pet Cremations

Individual cremation  
Scatter box - Rimu box - or your own urn  
2-3 days turnaround where possible  
Pick-up & delivery included



Bryce & Sandy  
06 348 0133  
[cremateamate@xtra.co.nz](mailto:cremateamate@xtra.co.nz)  
Wanganui



### REAL ESTATE



Looking for a Real Estate Agent?  
Take advantage of our free marketing package or get a 10% discount on commission as a Gold Card Holder\*

\*Terms and Conditions Apply

Param Singh  
021 263 4263  
[paramveer.singh@raywhite.com](mailto:paramveer.singh@raywhite.com)  
Licensed Salesperson REAA-2008



### SECURITY/PESTS

Call in and see us today!



- Security Doors
- Fly Screens (Windows and Doors)

Andrew Alexander  
Director

**OJ Andrews Engineering**

177 Mosston Road  
Ph 344 2710 or 027 471 6445  
[oandrews@xtra.co.nz](mailto:oandrews@xtra.co.nz)

### TYRES

**THE TYRE WAREHOUSE**  
Love Tyres Limited



**Cheap New & Second Hand Tyres**

- Wheel Alignments
- Vulcanise Tyre Repairs
- Fit, Balance Punctures



WINZ Quotes - EFTPOS - Farmers & Credit Cards - ALL Welcome

**Ph 06 344 8300**

OPEN 6 DAYS - Mon-Fri 8.30am - 4.30pm, Sat 9am - 12noon



# SPECIALISED SERVICES

## 'Sort It Out' expands range and includes local products

Rose Stokes set up 'Sort It Out Landscape Supplies' at 19 Rakau Street off Mill Road, 19 months ago and the business is thriving. They stock a large range of landscape supplies, including bark and mulches, soil, sands, metals and mixes, suited to all types of

gardening needs. Rose is now supported by Ian, Tracey and Doug.

The range of products has expanded with a total of 26 bulk bin products available. Recent additions include Large Bark Nuggets and Bark Mulch. Sort It Out also stocks complementary products, such as Certus

Pavers (stepping stones, non-slip and square pavers), Simply Wrought

Iron garden art work and Louise Herman mosaics – all made locally.

Although it is now summer, it is the best time to stock up on

firewood for winter. Sort It Out has mac and pine – dry, ready to go and delivered free with the city limits when purchased by the cubic metre. They deliver six days a week meeting a growing demand from customers. They also have a range of courtesy trailers available. Sort

It Out is a WINZ approved supplier.

For the bulk bins, Sort It Out charges by the scoop which is 250 litres or ¼ cube.

Their hours are Monday to Friday, 7.30am to 5pm, Saturdays 8am to 4pm, Sundays and public holidays from 9am to 3pm.

### HANDCRAFTS

*MiNZ wishes our customers a very Merry Christmas and a Happy New Year.*



**MiNZ** - Made in New Zealand Gallery  
Locally made Arts and Crafts  
OPEN 7 DAYS

137A Victoria Avenue, Wanganui



Rose with some of the products available at Sort It Out

### ELECTROPLATING

#### WANGANUI ELECTROPLATING

*For all your*

- \* Vintage Car Plating
- \* Chrome, silver, gold, copper and brass plating
- \* Silver repairs
- \* Antique finishing
- \* Metal polishing

68 Wilson Street. Ph Dave 345 5042

### STUMP GRINDING



**Stumpies Services Ltd.**  
Stump Grinding Services

Kerry & Lee-Anne Davies  
15 Mitchell Street,  
Aramoho

P: 06 343 7913

M: 027 612 5506

E: [stumpies.nz@gmail.com](mailto:stumpies.nz@gmail.com)

W: [www.stumpies.co.nz](http://www.stumpies.co.nz)



**Stumpies Wooden Toys**  
Wanganui  
06 343 7913



### CARPET CLEAN



Wanganui and South Taranaki

Superior Carpet & Upholstery Cleaning

**0800 227 822**

[www.chemdry.co.nz](http://www.chemdry.co.nz)

FREE ESTIMATES  
Residential & Commercial



### WHITEWARE

**REASONABLY PRICED  
REFURBISHED  
RANGES**

- Competitive Rates
- 6 months warranty on all parts & labour



**WE ALSO BUY STOVES**



**MURRAY'S Appliance Repairs**

DIVISION OF WALKER & THOMAS ELECTRICAL LTD

184A Glasgow Street, Wanganui  
Ph 344 7503 Mob 021 0823 6126

### MOTORS



ELECTRIC MOTORS SALES & SERVICE

184A GLASGOW STREET, WANGANUI  
12 ANDREW YOUNG STREET,  
PALMERSTON NORTH

Wanganui Workshop 06 344 7503  
Stephen Guilford 0274 879 526  
Phillip Ryland 06 344 5068  
Palmerston 06 353 3355  
Email [sales@rpmmotors.nz](mailto:sales@rpmmotors.nz)

[WWW.RPMMOTORS.NZ](http://WWW.RPMMOTORS.NZ)

### FIREWOOD / LANDSCAPING SUPPLIES

**Sort It Out**  
LANDSCAPE SUPPLIES



**Get yourself sorted  
for summer!**

19 Rakau Road (off Mill Road), Whanganui.

Tel. (06) 345 5494 or 027 641 6245 [www.sort-it-landscape.co.nz](http://www.sort-it-landscape.co.nz)

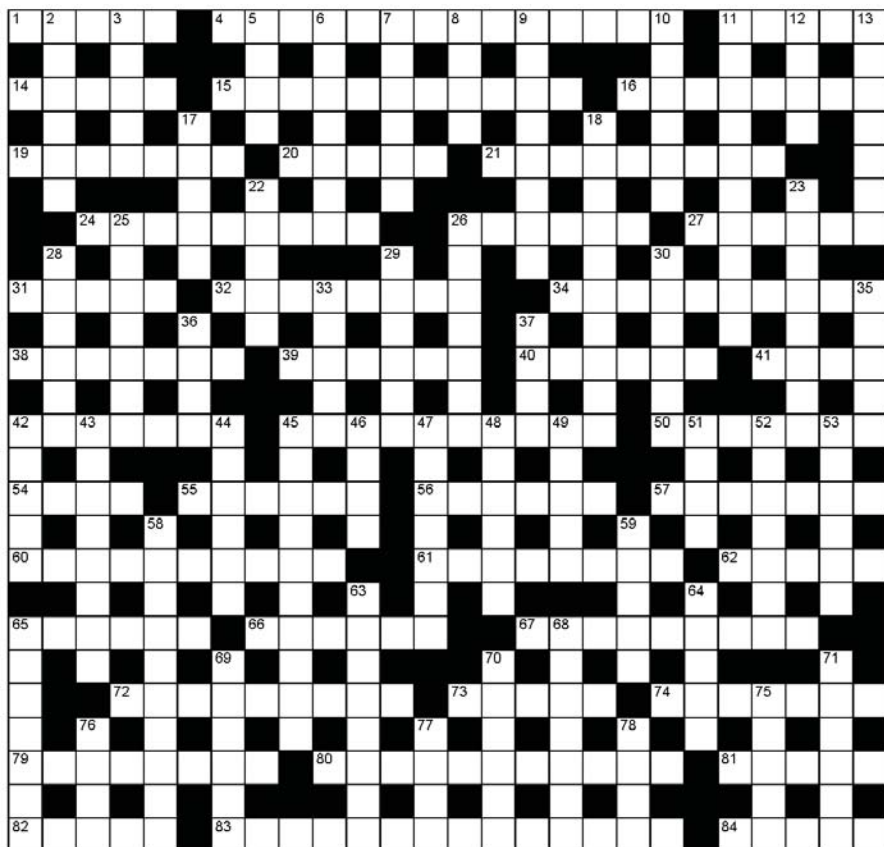
Opening Hours: Saturday 8-4pm, Sunday & public holidays 9-3pm, Monday-Friday 7.30am-5pm



## Jumbo crossword

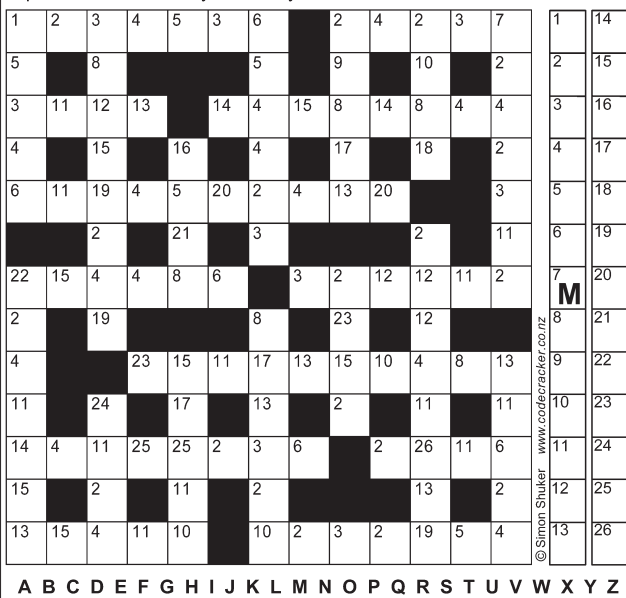
## ACROSS

- 1 Special skill (5)  
4 The best person or thing of a particular kind (5,2,2,5)  
11 Permit (5)  
14 Separated (5)  
15 Collection of keepsakes (11)  
16 Window in ship (8)  
19 Conveyance (7)  
20 Sailing ship (5)  
21 Careful and persistent work or effort (9)  
24 Hardship; misfortune (9)  
26 Black notes (6)  
27 Unlocked (6)  
31 Scum (5)  
32 Highly skilled musician (8)  
34 Customs established over time (10)  
38 Analgesic drug (7)  
39 Cowboy's rope (6)  
40 Old age, feebleness (6)  
41 Long ago (4)  
42 Gist (7)  
45 Shark type (10)  
50 Porridge (7)  
54 Pipe (4)  
55 Looked as if (6)  
56 Occurred afterwards (6)  
57 Vigorous campaign (7)  
60 Violent world-ending event (10)  
61 Strong dislike (8)  
62 Spear (5)
- 65 Artificial waterways (6)  
66 Frustrate (6)  
67 Pulled longer (9)  
72 Active by night (9)  
73 Indications (5)  
74 Shotgun (anag)(7)  
79 Crashed together (8)  
80 Offered (11)  
81 Australian "bear" (5)  
82 Trench (5)  
83 Persevere in promoting a futile cause (4,1,4,5)  
84 Lustre (5)
- DOWN**  
2 Male relative (6)  
3 Dog breed (5)  
5 Spool (4)  
6 Illuminated at night (7)  
7 Fire-breathing monster (6)  
8 Animal's den (4)  
9 Urgently vital (8)  
10 Wears away (6)  
11 Foresee (10)  
12 Circle (4)  
13 Demolished (7)  
17 Open sore (5)  
18 Despondent, discouraged (10)  
22 Up and about (5)  
23 Proclaim (8)  
25 Feel contempt for (7)  
26 Light motorcycle (7)  
28 Rubs out (6)  
29 Rostrum (6)  
30 Musically, in slow time (6)
- 33 Jewelled headdress (5)  
35 Artillery projectile (5)  
36 Metal (4)  
37 Slight advantage (4)  
42 Film set crowd filler (5)  
43 Legal writ (8)  
44 Girl's name (6)  
45 Half of a globe (10)  
46 Manufactured (4)  
47 Graceful and stylish (7)  
48 Silent (6)  
49 Encourages or assists, especially in wrongdoing (5)  
51 Well-ventilated (4)  
52 Communiqué (7)  
53 Habitual user (6)  
58 Cosmetic lacquer (4,6)  
59 Tall narrow building (5)  
63 Intense unfounded suspicion (8)  
64 Newspaper exclusive (5)  
65 Persuaded by force, threats (7)  
68 Citrus fruit (7)  
69 Stifle (anag)(6)  
70 At an angle (6)  
71 Promotional photos from a cinema film (6)  
75 One with morbid interests (5)  
76 Over-abundance (4)  
77 Racing toboggan (4)  
78 Church seats (4)

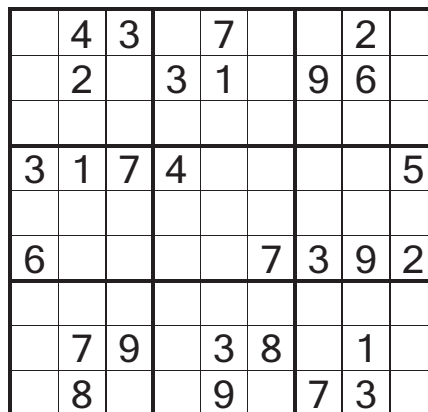


## SIMON SHUKER'S CODE-CRACKER Extra

EACH number in our Code-Cracker grid represents a different letter of the alphabet. For example, today 7 represents M, so fill in M every time the figure 7 appears. You have one letter in the control grid to start you off. Enter it in the appropriate squares in the main grid, then use your knowledge of words to work out which letters should go in the missing squares. As you get the letters, fill in other squares with the same number in the main grid and control grid. Check off the list of alphabetical letters as you identify them. Visit [www.codecracker.co.nz](http://www.codecracker.co.nz)



## Sudoku



MEDIUM

Fill the grid so that every column, every row and every 3x3 box contains the digits 1 to 9.

Previous solution

2	4	9	7	1	5	6	8	3
7	3	8	6	2	4	5	9	1
6	1	5	8	3	9	2	4	7
3	7	6	4	8	2	1	5	9
8	9	2	3	5	1	4	7	6
1	5	4	9	6	7	8	3	2
5	6	3	1	7	8	9	2	4
4	8	1	2	9	3	7	6	5
9	2	7	5	4	6	3	1	8

Previous CodeCracker solution

1	A	S	I	N	H	R	O	E	P	C	K	L	F
14	T	W	J	B	Q	U	M	G	V	Z	X	D	Y

All puzzles © The Puzzle Company  
[www.thepuzzlecompany.co.nz](http://www.thepuzzlecompany.co.nz)

## Previous crossword solution

**ACROSS:** 1 Descend, 4 Changeless, 9 Clogged, 13 Opus, 14 Ampere, 15 Assets, 16 Refined, 19 Pipe dreams, 20 Serenade, 21 State, 24 Mosaic, 25 Remiss, 27 Assistant, 32 Basement, 33 Border, 34 Boredom, 38 Crucible, 39 Trojan, 40 Thor, 41 Funny, 42 Egg on, 45 Hold your horses, 52 Pleat, 55 Cowed, 56 Sofa, 57 Shifty, 58 Depleted, 61 Kneaded, 62 Revere, 63 Aardvark, 66 Footloose, 68 Clever, 69 Impede, 73 Clasp, 74 Fletcher, 76 Portuguese, 81 Defrost, 82 Asylum, 83 Wizard, 84 Crop, 85 Release, 86 Desiccated, 87 Stupefy.

**DOWN:** 1 Droop, 2 Sourpuss, 3 Damned, 4 Cream, 5 Aces, 6 Glasses, 7 Lustre, 8 Satin, 10 Lies, 11 Glisten, 12 Erects, 17 Admiration, 18 Admit, 22 Bitterly, 23 Stool, 24 Manacle, 26 Even, 28 Shelter, 29 Wealth, 30 Branch, 31 Cornea, 33 Bijou, 35 Equal, 36 Rung, 37 Vote, 43 Ground, 44 Omega, 46 Oboe, 47 Deadens, 48 Oyster, 49 Rhine, 50 Outdated, 51 Swerve, 52 Pilgrimage, 53 Eats, 54 Tadpole, 59 Petty, 60 Tree, 64 Mould, 65 Rehearse, 67 Observe, 68 Ceramic, 70 Allege, 71 Chilli, 72 Starts, 75 Taste, 77 Oozed, 78 Empty, 79 Asks, 80 Swat.

## 5x5

E		A		T
	A		A	
A		D		E
	I		V	
E	R		D	

Insert the missing letters to complete ten words — five across the grid and five down.  
More than one solution may be possible.

Previous solution

S	L	A	S	H
P	O	N	C	E
L	A	G	E	R
A	M	E	N	D
T	Y	R	E	S



**Café & Catering**  
**06 345 0083**

*Merry Christmas & Happy New Year  
from Jono & the team!*

Open everyday except Christmas  
and Boxing days.



Cafe open from 8am - 4pm

Cnr Dublin & Pitt Streets 4501 Wanganui, NZ  
[www.yellowhousecafe.co.nz](http://www.yellowhousecafe.co.nz)

Find us on  
**Facebook**



## REVIEW: Cinders, the True Story - Repertory Theatre



Ashlyn Morris director/Fairy Godmother with Campbell Wilkins as Dandini

- Written by David Timmins, Directed by Ashlyn Morris, Repertory Theatre.

Leave your inhibitions at the door and take your inner child to make the most of Whanganui Rep's Christmas pantomime 'Cinders, the True Story'. Despite the modern-sounding title, it's the traditional Cinderella story, albeit with a few modern touches and local jokes.

This production starts as it means to go on with a glittery fairy godmother who acts as commentator as well as managing all the usual fairy godmother tricks. Ashlyn Morris, also the director, thoroughly enjoys herself in the role, encouraging boos and groans when needed.

She has some competition in producing Cinder's ball outfit from Buttons, a confident Freyja Wrigglesworth, who is secretly in love with Cinderella. Unfortunately, Buttons' dressmaking efforts are destroyed by Dotty and Spotty, the ugly sisters, in their efforts to steal the dress. Brie Parkinson

and Mikayla Walker enjoy themselves being suitably mean and nasty to their stepsister as well as to each other.

Toni Adams makes a charming Cinderella with a positive outlook on the world and makes the audience believe in fairy godmothers and true love, but is also pert and feisty and a thoroughly modern Miss when required.

Writer, David Timmins, has raided the Christmas cracker factory for the terrible jokes Buttons tells Cinder to cheer her up early on and the audience should come prepared with a joke to help. The best one might even get a prize.

Panto tradition dictates the Prince is played by a female, in this case Grace Trillo, whose ambition is to find a wife, although he is determined not to be taken in by the scheming Baroness Hardup. The main role of the principal boy in pantomime is to look good and be romantic, which Grace Trillo does well, but the Prince also has some great backchat scenes with the delightful Dandini, brilliantly played by eight-

year-old Campbell Wilkins who, although a little hard to hear at times, was excellent as the Prince's servant.

Chris Stedman as Cinderella's father, the much put-upon Baron Hardup, brings a solid presence to the role and gained the biggest laugh of the night when he finally had enough of being the henpecked husband and turns on the bossy Baroness, played to perfection by Cathy Gribble, who relishes her role as the conniving stepmother. She is a delight as an over-the-top pantomime villain.

The cast communicated their enthusiasm to the audience for this traditional pre-Christmas treat, with the simple sets allowing the audience to focus on the story.

Cinders runs until Sunday with performances at 6.30 pm tonight and Friday and matinees on the weekend. Tickets are available from the Opera House or at the door. In the spirit of Christmas, audience members are also asked to donate a personal care product for City Mission food parcels.

- Dick Ward

## Climate change on agenda for workshop

Feedback from Whanganui District Council's community engagement on climate change has been reviewed and the Mayor and Councillors will meet in January 2020 to discuss the feedback and the development of a Climate Change Strategy and Action plan.

Whanganui District Council's General Manager Strategy, Charlotte Almond says, "Between August and October this year we were out and about listening to the community's ideas on climate change. We gave people a wide range of ways to respond to us - whether it was attending a public meeting, completing a survey online or posting feedback into suggestion boxes based at libraries - and we heard from about 250 members of the community.

"The feedback has provided us with rich information about our community's views on climate change and the

role the community would like the Council to play in this area," Charlotte Almond says.

As part of this process the Council is meeting with representatives of local iwi to consider how a Te Ao Māori perspective could inform the Council's Climate Change Strategy work. A Regional Climate Change Collaboration Group has also been established and is meeting regularly to ensure that work being undertaken within the Horizons catchment area in response to climate change, is well coordinated.

"The upcoming workshop for elected members is a key step in the process towards developing a cohesive Climate Change Strategy that will factor climate change into all aspects of the Council's decision-making," Charlotte Almond says.



## J. WILLIAMS & CO. LTD

Large selection of quality jewellery & giftware to suit all budgets.

Over 400 pair of earrings from \$16- \$5,575

Many specialty lines

\* Evolve \* Ellani \* Pastiche \* Najo

NEW IN STORE

# STOW

LOCKETS

Especially created to hold precious keepsakes.

Create your own memories.



64 Victoria Avenue. Wanganui

Phone 06 345 7889

j.williamsjewellers@gmail.com



**BUY ANY USED VEHICLE AND RECIEVE A**

# FREE

**iPhone 11 or SAMSUNG GALAXY S10e**



\* For a limited time, Until stocklasts. Conditions apply. Giveaway applies to Apple iPhone 11 64gb or a Samsung Galaxy S10e 128gb models only. Limited colours available

### 05 HYUNDAI GETZ

1.3L, manual, 5 door, economical, 132,000kms.

Was \$5,995

**\$5,495**

### 07 TOYOTA COROLLA

1.8L, auto, tints, very tidy car great colour.

Was \$6,995

**\$5,995**

### 08 TOYOTA VITZ

1.3L, auto, tints, tidy, only 83,000kms.

**\$9,995**

### 07 TOYOTA WISH

1.8L, auto, tints, 7 seater, tidy, body kit.

**\$9,995**

### 08 HONDA ACCORD EURO

2.4L, auto, alloys, body kit, towbar, very tidy.

Was \$9,995

**\$8,495**

### 11 SUBARU OUTBACK

2.0L, turbo, diesel, 6 speed manual, NZ new.

**\$11,995**

### 04 MAZDA ATENZA

Spoiler, Manual, alloys, very tidy.

**\$6,995**

### 07 HONDA CRV SPORT

2.4L, auto, alloys, facelift, leather seats.

**\$9,995**

### 05 TOYOTA VITZ RS

Auto, alloys, tints, economical, and sporty.

Was \$9,995

**\$9,495**

### 06 SUBARU LEGACY

3.0L, auto, tints, 4WD, alloys, very tidy car.

**\$8,995**

### 10 SUZUKI SWIFT

1.5L, auto, alloys, NZ new, spoiler.

**\$9,995**

### 09 SUZUKI SWIFT

1.3L, auto, tints, air conditioning, only 85,000kms.

**\$8,995**

2017  
**Wanganui**  
**TRADE IN**  
CENTRE

Ph 06 281 3298 • 31 Heads Road, Wanganui

Wynnn 027 444 0507

**\* FINANCE AVAILABLE**

\* Conditions apply - Vehicles on special are not eligible for the \$2000 Minimum Trade Deal.



# Raetihi Christmas Festival

**THIS SATURDAY, 10am - 7pm**  
Stalls, Music, Car Display, Parade, Water Fight & more!



## The Raetihi Christmas Festival - it's only a slip away

The Raetihi Christmas Festival is on this Saturday, December 14 and Raetihi is again looking forward to welcoming the community of Raetihi along with the wider Waimarino community and all visitors.

The slip on State Highway 4 meant the town found itself with potential loss of through traffic and so it was decided that this year's event will be the biggest yet so that the town has something positive to look forward to. It will run from 10am, when the market stalls open, through to 7pm when the live stage closes.

The stage will be on the grass area alongside coach café giving people a space where spectators can sit, relax, chill and listen to the bands from the Sound Present Stage.

There will be plenty of Market stalls; 11 stalls providing a range of food items as well as a mini fairground area, with three fairground games including the drench stool, a bouncy castle, with popcorn, candy floss and Ameri-

can style hot dogs.

'Raetihi Santa', will be in the Grotto at various times through the day, with the Grotto positioned in the Community Space, besides the fairground.

A new addition this year, besides the library, will be a car show. This is a chance to admire some cool wheels, race cars, muscle cars, stock cars and sweet looking bikes.

The 'Giant Christmas Raffle' runs to 21 December when it will be drawn at the Raetihi Cosmopolitan Club. The major prize is a 65" flat screen Samsung TV - value of \$2300.

Local schools are organising the children's 'Recycling for Christmas' competition for something relating to Christmas made from recycled materials.

The Parade starts at 3.30pm, led by the Waimarino Junior brass band.

At 6.30pm kids are invited to have a water fight - so bring your water guns, squeeze bottles, or whatever.

# RAETIHI

## Christmas Festival & PARADE

### SAT 14TH DEC

**'It's about the Children'**

**A superb timetable of fun & entertainment.**

10.00 Seddon Street Closed to traffic!

10.00 Market Stalls Open

Tomobolla in action

11.00 Sound stage opens, (bring your rugs, chairs & relax)

11.00 Entertainment stalls open.

3.00 Auction of Children's Christmas recycled art

3.30 Parade Starts

6.00 Market closes

6.30 kids water fight, opposite RFS

7.00 Sound stage finishes

7.30 The Herbs movie starts at the theatre

Giant Raffle tickets on sale all day!!

It's a 'Slip of a Christmas'

## Searching questions for NZTA and the Government

- Cr Helen Craig

I'm heartened that NZTA have expressed commitment to repairing the large slip at Matahiwi and other areas on the Parapara SH4. However, there has been systemic delays and lack of maintenance for years. This community needs more assurances that this vital link receives the appropriate level of funding, not just now, but into the future.

NZTA are sending a delegation to Council on Tuesday, December 10, following my lobbying for many months. Unfortunately I cannot attend, but the following questions will be asked on my behalf. I'm sure NZTA are doing their best, but is the Government funding this vital route adequately? Since they are soon to announce more funding for infrastructure, we need to know that our District counts!

The Railway Bridge Walkway is in a poor state and will close shortly. Our community really needs this link across the river. With Government emphasizing the need for more walking and cycling tracks, safety and reducing carbon emissions, this existing link should be a priority to repair otherwise its likely to close due to its poor state of repair. What are the plans to fund this?

How does NZTA prioritise spending on NZ roads and what priority is SH4 Parapara? How does this classification affect the budget and prioritizing of general repairs and maintenance and secondly emergency repairs following slip damage.

There are currently 5 major slips on the Parapara. The most recent resulted in the total loss of the road. The other 4 slips have resulted in single lane stretches controlled by traffic lights and have been there for a number of years, in some cases since 2014. Are they committed to fully reinstating the road to two lanes over the next 12 months?

The road is also showing wear and tear all along the route that appears to indicate the road overall, is in poor condition and further slips and closures can be expected. Are they committed to a full maintenance programme?

Why has the Parapara not been kept in better condition and why have these long-term slips not been

repaired. Why has NZTA not fully assessed repair solutions for the 4 slips up to this point? If they had, work could start immediately on these stretches. Instead teams are starting on other areas whilst these areas are still assessed. In the case of the Upokongaro slip which occurred 4-5 years ago, why has it taken this long to finalise an agreement with the property owners so that repairs could begin.

NZTA have said they are now prioritising the Parapara. Can they give this community an assurance that the entire Parapara will remain a priority road until all slips have been fully repaired and regular maintenance and preventative maintenance is programmed into the route.

When will NZTA hold a public meeting in the Whanganui District, to answer the questions and hear concerns from users of the road, especially farmers, tourism and transport operators?

What progress is being made to rectify the Matahiwi slip south of Raetihi and what assurances can NZTA provide regarding the safety of the temporary route being proposed?

What in-depth studies are being undertaken to assess the increasing damage to national and local roads by "Heavy" vehicles, particularly the likely increase in logging trucks. What additional financial support will Councils receive via the FAR subsidy (currently only 61%), to assist in maintaining local roads?

Does NZTA have locally based expertise to manage and understand the unique nature of the Parapara and how best to maintain and prevent future damage due to trucking, slash damage to the river sides and weather events?

## Only 1 more paper until Christmas!

Book your advertising now.  
email:  
[rivercitypress@xtra.co.nz](mailto:rivercitypress@xtra.co.nz)  
Phone 345 3666



48 Seddon Street, Raetihi  
P: 06 385 4976

E: [angellouisecafe@gmail.com](mailto:angellouisecafe@gmail.com)

Open from 7am to 4pm daily  
Breakfast Menu & Lunch menus

A fine selection of homemade savoury & sweet items. Including our famous pasties and Wiki's delicious Carrot cake.

Out catering a speciality



<https://www.facebook.com/AngelLouiseCafeRaetihi/>

## AUTO SERVICE CENTRE

Holden Service Centre  
Wheel Alignments  
Bridgestone and Firestone Tyres

84 Clyde Street, OHAKUNE  
Ph 06 385 9222



**CALTEX**

**Caltex Raetihi**

are proud to support  
**RAETIHI**

24hr Truck Stop

2 Parapara Road, Raetihi. Ph 06 385 4120



**LILBURN TRANSPORT**  
RURAL TRANSPORT SERVICES

Proudly supporting  
**Raetihi**

WOOL • TIMER • FERTILIZER • GRAIN  
METAL • FEED SUPPLEMENTS

We also supply Builders Mix, Bark, Stone,  
Sand and Scoria.

Please call the office for a price.

ROBBIE: 027 442 8686 (Enquiries) OFFICE: 06 385 8583  
OFFICE CELL: 027 641 2191 (Niketa) EMAIL: [robbie@liltrans.co.nz](mailto:robbie@liltrans.co.nz)  
15 RAILWAY ROAD, RAETIHI 4632

## UNITED CRICKET

The toss is always easy when you want to bat and the opposition wants to bowl. Little did the Property Brokers P1s know the kind of power hitting they were about to witness as openers Robbie Power and Gerard Hobbs came out to bat. It was the penultimate ball of the innings when Hobbs finally returned to the pavilion Robbie hitting max power with some lusty blows straight and over cow. 6 sixes and 15 fours in a powerful 121 no off just 61 balls. It was an innings that had been coming for a while and what a way to bring up your first club 100 but with a deft glide down to 3rd man. At the other end he had an able support player in Gerard Hobbs who stroked 69 off 61 to only be out on the second to last ball trying to chip one

over mid off. It was a return to the Hobbs of old with some glorious cover drives. Thus finishing 207 for 1. It's not often you bat four and never get out to bat. As it was Marist took the long handle to it, with Zak O'Keefe especially dominating from the northern end. Using the strong northerly wind to hoist 8 sixes of his own, 4 of which resulted in lost balls. Our bowlers struggled for length bowling into that wind. His demise for 92 from none other than the king of the power play, Robbie, who managed to pick up 3 wickets to go with his 100, effectively ended any Marist hopes of an unlikely victory and they batted out their overs falling 59 runs short And another win for the lads.

## Property Brokers

**Team Ritesh**

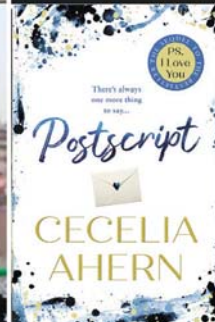
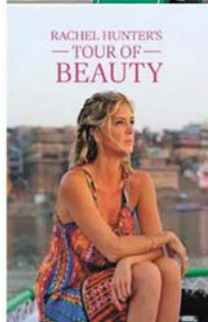
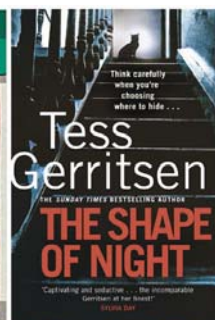
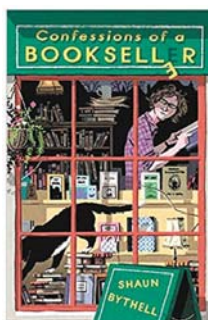
Whanganui's trusted real estate opinion!  
Property Brokers Limited Licensed Real Estate Agents Act 2008

Ritesh Verma 027 577 7938 Bruce McGhie 027 333 2587 Kayana Tahana-Hopkins 022 096 8310

**DAVID JONES**  
MOTORS  
Proudly Supporting The Community For 35 YEARS  
276 & 330 Victoria Avenue  
Wanganui  
Phone 06 345 5115  
[www.davidjones.co.nz](http://www.davidjones.co.nz)



## REVIEWS: Latest Books in the District Library



### Confessions of a Bookseller - Shaun Bythell

Shaun is the owner of The Bookshop in Wigtown. The Diary of a Bookseller introduced us to the joys and frustrations of a life lived in books. Sardonic and sympathetic in equal measure, Confessions of a Bookseller will reunite readers with the characters they've come to know and love.

### The Shape of Night - Tess Gerritsen

A woman trying to outrun her past is drawn to a quiet coastal town in Maine and to a string of unsolved murders, in this haunting tale of romantic suspense.

### Rachel Hunter's Tour of Beauty - with Emma Clifton

Over the course of a life changing year, supermodel Rachel Hunter, was given the challenge of looking at how different countries around the world define the idea of beauty and wellness. Tour of Beauty is also an award-winning television show that has now been broadcast in over 140 countries around the world.

### Postscript - Cecelia Ahern

It's been 7 years since Holly's husband died - 6 years since she read his final letter, urging Holly to find the courage to forge a new life. Holly begins a relationship with the PS, I Love You Club and each of these people calls upon Holly to help them leave something meaningful behind for their loved ones. She will embark on a remark-

able journey - one that will challenge her to ask whether embracing the future means betraying the past and what it means to love someone forever.

These books are available at all good bookstores, and of course, Whanganui District Library!

During the Labour Party Conference in Whanganui, Health Minister Dr Hon David Clark, Labour Whanganui candidate, Steph Lewis and local member, Tim Easton, met with representatives of Win1000 at Live & Learn early childhood centre to discuss the opportunities to support young children in Whanganui.

Win1000 stands for Whanganui Interagency Network and the 1,000 represents the first 1,000 days of a child's life because those are the most crucial to a child's development. The group includes Whanganui District Health Board; Whanganui Regional Health Network; Whanganui District Council; Te Puna Matauranga o Whanganui; Ministry of Education; representation from all education sectors; Oranga Tamariki; Infant, Child, Adolescent, Mental Health and Addiction Services; Jigsaw Whanganui; and NGOs.

"The early years of a child's life are the most important. That is why the Government has invested in the family's package including a Best Start payment of \$60 a week for the first three years of a child's life, gave ECE the first across-the-board



From the left: Linda Ireton, Principal Keith Street School, Zoe Young, Resource Teacher of Learning and Development, Steph, Trish Silk Clinical Nurse Manager Pediatrics at the DHB, Hon David Clark, Marie Butterini from Love and Learn and Tim Easton

funding rate increase in a decade and increased funding to Oranga Tamariki to support vulnerable children" said Steph Lewis.

"It was great to return to Live and Learn and see the progress that Marie and her team have made since I last visited two

years ago to bring agencies together to provide wrap around services to families with children there. This sort of collaboration is exactly what we need to ensure every child gets the best start in life."

"It was a great opportunity for Minister Clark to

hear about the challenges they face and opportunities moving forward. It was also a chance for him to talk to some of the members of Win1000 about what opportunities there were for funding to support the work they are doing such as funding the Government has made

available for mental health services."

The group was able to see how Live and Learn is using their facilities to reach out into the community including planting community gardens, the satellite library and running skills-based workshops for families.

## Recent Bereavements



### Sadly passed away recently...

Herbert George (George) CANTRICK, aged 84 years on 7 December, 2019.

Richard Harrington Noel DENCH, aged 76 years, on 18 November 2019.

Victor Pereira SILVEIRA, aged 59 years, on 28 November, 2019.

Adrian Mark Tawaroa TAKIARI, on 4 December, 2019.

Joyce THOMAS, aged 95 years on 7 December, 2019.

Christine (nee Raupita) WALLACE, aged 63 years on 5 December, 2019.

Jean Elizabeth (formerly Whitaker) WILLIAMSON, aged 91 years, on 10 December, 2019.

Lynette Clare WILSON, aged 64 years, on 6 December 2019.

... Because people matter

**Victoria Oaks**  
FUNERAL HOME

**Ph 06 213 4864**  
(24 hours)

Complete care options starting from \$2400  
Prearrangement and prepayment plans.

**Steve & Tonya Hibberd**

260 Victoria Avenue, Whanganui  
www.victoriaoaks.co.nz

**Dempsey & Forrest**  
Funeral Directors

**Intimate Garden Courtyard Funerals**

This tranquil space offers a unique setting for smaller funerals. Warm sun and beautiful flowers create a special, memorable farewell. Arrange a visit today and meet our friendly team.

**Phone 349 0202** (any time, day or night)  
www.dempseyandforrest.co.nz

**Anderson Memorials**  
Your loving memories set in stone

**HEADSTONES**  
Family owned for 105 years

For all monumental work in all cemeteries

462 Somme Parade, Wanganui - opposite the cemetery.  
Tel (06) 343 8708, Email: info@anderson-memorials.co.nz  
Showrooms in Feilding & Palmerston North  
www.anderson-memorials.co.nz

Uniquely special farewells

**Cleveland**  
Funeral Home

(06) 345 5522

173 - 179 Ingestre Street



**TRADES AND SERVICES**



06 345 0924  
thompsonplumbing@outlook.co.nz  
thompsonplumbing.co.nz



Phone STU for an appointment on  
**027 348 5649**

**Wanganui Motors**  
82 Ridgway Street | Wanganui  
P 06 349 0930  
www.wanganuimotors.co.nz

**SITUATION VACANT**



# APPRENTICE JOINER REQUIRED

Rob O'Keeffe Joinery are looking for an apprentice. We have a position for a young person leaving school. This is an opportunity to learn a trade & have a good career.

Joiners make windows & doors, stairs, machine architrave & skirting, kitchens, vanities & units for offices & shops.

We use the latest electronically controlled machinery. In order to learn to use these machines & do the assembly work that goes with them you will need to have done well at school & be able to make a long term commitment.

If you are really keen on this job please email Rob O'Keeffe  
okjoiner@extra.co.nz Please do not ring or text.

**100% locally owned**



**Furniture removals door to door  
National and international**

390 Heads Rd, P.O. Box 5042 Wanganui  
Phone: 06 344 7002 Email: darrell@hoskincarriers.co.nz

## Sue's Thai Massage

Relieve Stress, Pain, Improve Circulation, Feel Better



Ph 06 777 3105  
022 001 6476  
180 Wicksteed Street.

1/2 hour \$35  
1 hour \$60

Web: suesthaimassage.wanganui.com



**FREE Quotes**  
• Full Tree Stump Removal  
• Full Site Clean Up  
• 7 Days a Week - Hours to suit you.

Ph 0274 88 90 90  
A/hrs 06 347 9405  
www.stumpgrinding.co.nz  
bazwatt127@gmail.com



Baz's Stump Grinding

## Rivercity Orchids

Local Growers & Retailer

Acclimatised to the Whanganui Climate

- PHALAENOPSIS
- CYBIDIUMS
- DENDROBIUMS
- SARCOCHILUS
- ONCIDIUMS
- CATTLEYS
- PAPHIOPEDILUMS
- SPAG MOSS • ORCHID FOOD BARK • FERTILISER

## RIVERCITY ORCHIDS

2A St Leonard St, St Johns Hill

**027 282 2825**

Please phone / text to check on retail open hours. Eftpos available

## TRADES & SERVICES

**DECKS**, gates, trellis, fencing pergolas, odd jobs. No job too small. Yardiez Maintenance. Mobile 0278439392. Give us a call.

**FENCES**, gates, trellis, decks and more. Satisfaction assured. Mobile 0279321202.

**RCP - the good news paper.**



Installation Repairs  
Certified Waterproofer  
No Job Too Small  
**Felipe Rodriguez**  
Mobile: 021 181 2072  
Email: delchico1@outlook.com

## FRUIT & PRODUCE

**FRESH** vegetables available, open Thursdays, Fridays and Saturdays. Laugeson's Gardens, Westmere Road.

## FOR RENT

**FREE** electricity. Secure, quiet, friendly furnished flats and caravans. Bignell Street Motel & Caravan Park. Ph. 0800 244 635.

## TO LET

**FLATting** too expensive? Try a portable cabin. Warm, comfortable, self-contained sleepout, delivered. Phone/text 027 450 4965 or (06) 348 7887, www.ptportables.co.nz.

## WORK WANTED

**CLASS-5** Driver F.W.R relief, part-time or seasonal. Phone 027-2500818.

**HOME** maintenance and shifting. House clean-up, gardening, lawnmowing, water-blasting, spout cleaning, de-cluttering. Anything considered. Ph Ray 027 2807015.

**LAWN** mowing, gardening. Small trees pruned. Ring today, mow tomorrow. No Bull. Phone Bill 345 0120.

## SITUATIONS VACANT

**GET** paid to exercise! Pamphlet Distribution require reliable runners to deliver RCP and brochures each Thursday only - rain, hail or shine. Must be reliable and honest. Phone Bubs on 343 2010 or 027 218 2010.

## ONLINE SERVICES

**WHANGANUI** News Online. Over 12,000 users. www.whanganuinews.nz or find us and others at www.onlineservices.nz. Just click the wanted site.

## PROPERTIES FOR SALE

### Thinking of selling?

Call me today for your Free Market Appraisal.

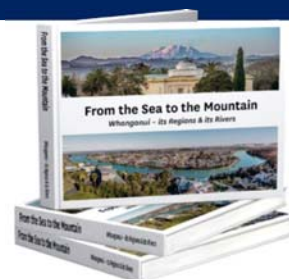


**Ananda de Koning**  
027 563 3414

**BAYLEYS**  
BARTLEY REAL ESTATE,  
Licensed REAA 2008

## FOR SALE

### From the Sea to the Mountain Whanganui - its Regions & its Rivers



only **\$24.95** per copy

Get your copy today at  
**River City Press, 52 Ingestre Street**



the main evidence which points to this young Thomas being the leading character in our series featuring the "somewhat confirmed offender" is that he was 48 when he died, indicating a birth year of 1865. On that reckoning Thomas would have been 13 at the time of the 1879 explosion which took John Nixon's life. His evidence at the inquest began: "I work for Duncan and York. I am nearly fourteen years of age."

Murray Crawford is the author of "Whimsical Tales of old Wanganui", available at River City Press, \$35 per copy. All proceeds to Alzheimers Whanganui.

# Whimsical tales of old Wanganui

## Episode 9: A lucky escape for young Tommy

- By Murray Crawford

In our previous episode we laid Thomas Atkins to rest, the former proprietor of the Carbine Stables having succumbed to "a severe illness".

This series began with Atkins as a promising young entrepreneur who would become one of our town's first motor vehicle owners and one who test-

ed the road rules (and the constabulary's ability to enforce them) to their limits. But what about the even younger Thomas Atkins?

It is very likely he was the young lad of that name who survived a very serious and gruesome accident which occurred in Wanganui in 1879. Engine driver, John Nixon, was killed when a boiler exploded at

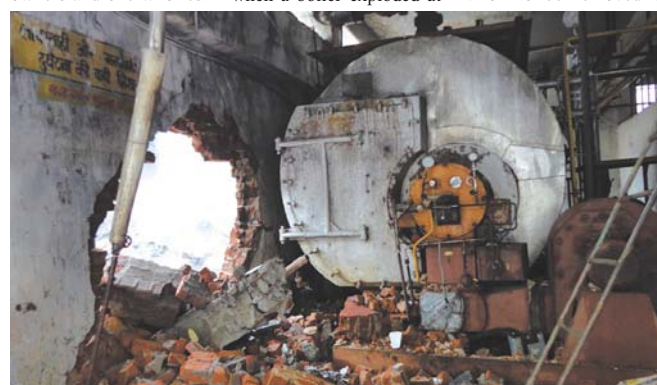
Duncan & York's sawmill on 5 May. An inquest was held at the Ship Hotel the following day at which Thomas, employed as a stoker, was asked to give evidence.

Previous witnesses had described the explosion which destroyed both the engine and its housing. Dr Henry Sorley had ordered Nixon to be removed to

the Ship Hotel, having examined him and finding his pulse beating naturally.

"He was suffering from intense compression of the brain. The skull was broken and the brains protruding. The brain was ruptured. The lower jaw was fractured in several places..... By the time I had finished my examination the pulse had stopped and the man was dead." (Herald: 7 May, 1879).

Young Thomas had been oiling the engine's shaft just ten yards away from the boiler when the explosion occurred, so one very lucky boy was called to the inquest. He said he had last seen Nixon about two minutes before the explosion. His evidence reveals a very precise understanding of the workings and maintenance of the machinery, pointing to someone capable of one day embracing the marvels of the internal combustion engine. But



Boiler



# NEED HELP?

Emergency ..... 111  
City Mission/Foodbank ..... 345 2139  
Women's Refuge Wanganui ..... 344 2004



# CLASSIFIEDS

52 Ingestre St Ph 345 3666  
Email: [rivercitypress@xtra.co.nz](mailto:rivercitypress@xtra.co.nz)

Nominate someone you think is deserving of our **Bouquet of the Week!**

Email or facebook message us with your nomination and reason why they deserve to win!

email: [rivercitypress@xtra.co.nz](mailto:rivercitypress@xtra.co.nz)  
facebook: River City Press Wanganui



## ENTERTAINMENT / PUBLIC NOTICES

**ALBI AND THE WOLVES**  
PLAY THE WHANGANUI MUSICIANS CLUB  
FRIDAY 20TH DECEMBER  
7PM  
\$20  
WITH SPECIAL GUESTS  
**THE CONRAYS**

[WWW.ALBIIANDTHEWOLVES.COM](http://WWW.ALBIIANDTHEWOLVES.COM)

**BUYING and SELLING USED FURNITURE**

**cinza BARGAINS**

Phone 345 3154  
54 Maria Place Extn  
Email: [cinza2@xtra.co.nz](mailto:cinza2@xtra.co.nz)

**LAWNMOWING**

**AFFORDABLE** lawns, great quality service, great price. Pensioner rates available. Call Paul on 021 245 4999.

**LAWNS NEED MOWING?**  
**Cutting Edge Lawns**

Keeping Lawns & Costs Down!

- Locally owned & operated
- Pensioner discounts
- WINZ Quotes
- Ride on work

**Wayne Bishop**  
Ph 06 343 1454  
Mob 027 555 3074

**PUBLIC NOTICES**

COMMUNITY Event Services. Whanganui Sound Services 027-2644-399. Not in book.

**FOR SALE**

**GOLDFISH** red-comets, calico-fans, Shubunkins, black-moors and other types. Variety of sizes. Phone 3472199.

**JOE** Lett Ltd, all sorts of mobility aids including scooters, wheelchairs, available. Joe Lett Ltd, 11 Churton Street, ph 345 8599.

**NEW** Seasons fresh native and ornamental shrubs and trees from \$5.00 to \$15.00 for large grades now ready, fine landscaping grades, good hedge lines. Dried blood \$8.00 per kilo. Excellent for all garden use. Give your plants that boost now. Parnells Quality Tree & Shrub Nursery, 102 Fox Road., Phone 344 6645, Est 1895.

**FIREWOOD FOR SALE**

**AFFORDABLE** firewood from \$70 a cube for sale. Please phone us on 06 3438466.

**PETS AND LIVESTOCK**

**DOG** grooming at Pet Dog School. All breeds, all styles from simple to stunning. Get the look you want. Ph: (06) 345 2553.

**THREE** Bantam hens, laying for sale - \$30. Ph 3441047.

**EMBASSY 3** Dec 12 - 18

Movie	Time	Rating	Cinema
<b>AFTER THE WEDDING</b> (M)	2hrs 6min	THE LOUNGE*	Cinema 2.3
Thur, Fri 12.30pm*, 5.15pm*, 8.15pm	Sat, Sun 3pm*, 5.25pm*, 8.30pm		
Mon, Tue, Wed 12.30pm*, 5.15pm*, 8.15pm			
<b>FORD v FERRARI</b> (M)	2hrs 47min	THE LOUNGE*	Cinema 3
Thur, Fri 7.35pm*	Sat, Sun 7.45pm*	Mon, Tue, Wed 7.35pm*	
<b>FROZEN 2</b> (G)	1hr 58min	THE LOUNGE*	Cinema 3
Thur, Fri 10.30am, 1pm, 3.30pm, 6pm	Sat, Sun 10.30am, 1pm, 3.30pm, 5.45pm		
Mon, Tue 10.30am, 1pm, 3.30pm, 6pm	Wed 10.30am, 12.55pm, 3.30pm, 6pm		
<b>KNIVES OUT</b> (M)	2hrs 25min	THE LOUNGE*	Cinema 2.3
Thur, Fri 12.30pm, 7.45pm	Sat, Sun 10am*, 8pm	Mon, Tue, Wed 12.30pm, 7.45pm	
<b>MRS LOWRY &amp; SON</b> (PG)	1hr 46min	THE LOUNGE*	Cinema 2
Thur, Fri 3pm*	Sat, Sun 6.30pm	Mon, Tue, Wed 3pm*	
<b>PLAYMOBIL: THE MOVIE</b> (G)	1hr 55min	NEW	Cinema 1.2
Thur, Fri 10.15am, 1.15pm*, 3.15pm	Sat, Sun 10.10am, 12.20pm, 4.25pm		
Mon, Tue, Wed 10.15am, 1.15pm*, 3.15pm			
<b>THE ADDAMS FAMILY</b> (PG)	1hr 40min	THE LOUNGE*	Cinema 1.2
Thur, Fri 11am*, 3.45pm*, 5.30pm	Sat, Sun 10.10am*, 2.10pm*, 4.10pm*	Mon, Tue 11am*, 3.45pm*, 5.30pm	
Wed 10.20am, 3.45pm*, 5.30pm			
<b>THE GOOD LIAR</b> (R13)	2hrs 4min	THE LOUNGE*	Cinema 1*
Thur, Fri 10am*, 5.45pm*, 8.15pm*	Sat, Sun 12.40pm* 6.10pm*, 8.30pm*		
Mon, Tue, Wed 10am*, 5.45pm*, 8.15pm*			
<b>THE QUEEN'S CORGI</b> (PG)	1hr 40min	NEW	Cinema 1.2
Sat, Sun 12.10pm*, 2.30pm			

Times are subject to change - please confirm at [www.embassy3.co.nz](http://www.embassy3.co.nz)  
office@embassy3.co.nz | info line 06 345 7958

**WHANGANUI DISTRICT COUNCIL**  
Te Kaunihera a Rohe o Whanganui

**Revised Valuation Rolls**

The Valuation Rolls for Whanganui District Council have been revised by Quotable Value Limited (QV), the Council's valuation service provider.

The revised Rating Values are effective as at 1 September 2019. Notices of valuation will be posted to owners and ratepayers from 16 December 2019.

The District Valuation Rolls will be freely available for public viewing Monday-Friday 8am-5pm at Council Customer Services, 101 Guyton Street, from 16 December 2019 until 31 January 2020.

### Objections

Objections to the revised valuations must be lodged in writing or online at [ratingvalues.co.nz](http://ratingvalues.co.nz) no later than 31 January 2020.

Objection forms are available from Council Customer Services or Quotable Value Limited and should be posted to:

Quotable Value Ltd - Business Support  
Private Bag 39818  
Wellington Mail Centre  
LOWER HUTT 5045

More information about *Understanding your Rating Value* can be found at [ratingvalues.co.nz](http://ratingvalues.co.nz)

Kym Fell, Chief Executive

[www.whanganui.govt.nz](http://www.whanganui.govt.nz)

**River City Press**  
- the good news paper  
52 Ingestre Street - phone 345 3666

**ROYAL WHANGANUI OPERA HOUSE**  
Booking Office  
Ph. 349 0511

ONLINE BOOKINGS  
[www.whanganuivenues.co.nz](http://www.whanganuivenues.co.nz)

**Booking Office Hours:** Mon. to Fri. 10am-4pm  
**Booking/service fees apply - no refunds/no exchanges**

**Repertory Theatre**  
**Cinders: The True Story**  
Thursday 12 & Friday 13 Dec., 6.30pm  
Saturday 14 December, 4pm; Sunday 15 December, 2pm  
Adult \$25, Senior/Rep member \$20, Student under 15 yrs \$15, Child under 15 yrs, \$10, Family 2A+2C \$55.

Whanganui Opera Week/NZ Opera School  
Heritage House  
**Afternoon Recital**  
Wednesday, 8 January, 2pm  
Tickets \$25

Prince Edward Auditorium, Collegiate  
**Masterclass 1 with Cesar Ulloa**  
Friday 10 January, 7.30pm  
**Masterclass 2 with Nuccia Focile**  
Monday, 13 January, 7.30pm  
Tickets \$15 each

Royal Wanganui Opera House  
**Great Opera Moments 2020**  
Saturday 18 January, 7.30pm  
Adult \$35, Senior/Student \$30

**The Air Force on Tour**  
Friday 28 February, 7pm  
Adult \$35, Senior/Unwaged \$30, Child 3-13yrs/Student \$5

Bason Botanic Gardens  
**The Merchant of Venice**  
Thursday 27, Friday 28 & Saturday 29 February, 7pm  
Sunday 1 March, 1pm  
Adult \$25, Senior/Student \$15, Child to 18yrs \$10

Chamber Music Whanganui  
**Celebrity Subscription Series**  
NZ String Quartet, Cowan/Darroch Duo, NZ Trio, Anna Im and Stephen de Pledge, Michael Houston.  
Full subscription \$95 (4 pre-paid tickets)  
General subscription \$30 - tickets \$20 each  
Individual concerts: Adult \$35, Senior \$30, Student \$5

**RNZB Tutus on Tour**  
Saturday 14 March, 7.30pm  
A + B reserve seating. Adult \$39-\$29;  
Student/Senior/Group 6+ \$35.30-\$26.30. Child \$24-\$13

**Soweto Gospel Choir**  
Saturday 21 March, 7.30pm  
A + B reserve seating  
Adult \$87.50 - \$77.50, Senior \$82.50 - \$72.50, Student \$72.50 - \$62.50, Child U18 \$51.90 - \$41.90

**Tina - Simply the Best**  
Thursday 26 March, 8pm  
Adult \$76.50, Group 6+ \$71.50, Child to 12 years \$35.50

**Menopause The Musical®**  
Saturday 28 March, 7.30pm. Tickets \$69.90

Concert Chamber WWMC  
**The Piano Trilogy**  
Oleg Marshiev - 28 March  
John Chen - 18 April  
Jun bouterey-Ishido - 2 May  
Triology pass \$80.  
Individual concerts: Adults \$35, Senior \$30, CMW member \$20, Student \$5

**The Ten Tenors - Love is in the Air**  
Tuesday 5 May, 7.30pm  
Premium Adult \$121.60, Child U18 \$82.50  
A Reserve: Adult \$92.50, Group 10+ \$82.50, Child U18 \$82.50  
B Reserve: Adult \$82.50, Child U18 \$82.50

**World of Musicals**  
Tuesday 9 June, 7.30pm  
A + B reserve seating  
Adult \$87.50-\$82.50  
Senior/Group 10+ \$82.50 - \$77.50; Child U15 \$72.50-\$62.50.  
Family 2A+2C \$260.40

**Friends The Musical Parody**  
Friday 25 September 7.30pm  
Premium seats: Adult \$92.50 - Child \$72.50  
A reserve seats: Adult \$82.50 - Group 10+ \$72.50, Child \$72.50  
Book early for the best seats. Gift vouchers available.

# NEW BLOOD WANTED

Give the gift of blood.  
It costs nothing.

**St Mary's Church Hall**  
1 Campbell Street

**Tuesday 17 Dec**  
8.30am - 1.00pm

**Tuesday 31 Dec**  
8.30am - 1.00pm

MAKE AN APPOINTMENT TODAY  
0800 448 325

**SAVE LIVES GIVE BLOOD**

0800 GIVE BLOOD

[www.nzblood.co.nz](http://www.nzblood.co.nz) **NZBLOOD**  
Te Rotanga Toi O Aotearoa

**HEALTH & BEAUTY**

**JADE** Traditional Thai Massage. Excellent massage at reasonable prices. 64 Guyton Street. Phone 348 8466 for an appointment.

**JAX** Hair Studio. Latest edition GHD in store. Open 6 days, late night Thursday. 51A Ridgway Street. Ph: 3472008.

**PERSONAL**

**FREE**, confidential health checks, STI and HIV screening. Outpatients Department, Wanganui Hospital. Monday and Thursday from 5pm - 6pm. Phone 348 1775/ 021 323077.

**PREGNANT?** Worried? Need to talk? We care, listen and help. Ph. 348 0008 or 0800 PREG-NANT 24/7.



with Mark Dawson

## Masters Games

Declining numbers of competitors; operating at a loss; holding its hand out for ratepayer funds ... the Masters Games is sailing on choppy waters again.

It's plus ça change, plus c'est la même chose for Whanganui's iconic sporting event which, despite efforts to re-format itself, has experienced reduced participation and a battle to break even for its last three or four iterations.

Last month the trust which runs the event asked for \$100,000 from the punters pockets. The annual funding from the district council has been \$40,000 so, not surprisingly, some quizzical eyebrows were raised by our elected representatives.

And, of course, the self-appointed guardians of the public purse (or, at least, of their own wallets) tut-tutted about money going to something with "minority interest".

They may have half a point there – the biennial Masters Games is largely for the out-of-towners. They swell the numbers, they are the ones on a mini activity break; for

the locals, their own sporting competitions may assume greater significance and getting them to sign up for the Masters is like pulling teeth.

But what should be remembered is that 30 years ago when the Games were inaugurated in the River City, we were breaking new ground. Such all-embracing national sports events were thin on the ground and the notion of using sport to promote tourism was quite innovative.

Back in 1989, it was run on a shoestring – so no change there – but the balancing of the books was achieved by looking at the money brought into the city, and that is still the case.

This year's Games in February made a \$19,000 loss, but on the other side of the ledger it is estimated to have boosted the local economy by \$2.9 million.

And that's not the only plus from the last 10-day, 50-sport jamboree. Two other good things happened – the council took a tighter grip on the event to keep it accountable; and it got a major naming sponsor in the Downer group.

New Zealand's longest-running multisport event



Mark Dawson

is back here in 2021 and, as usual, it needs a fresh coat of paint. It needs new attractions, new ideas, new sponsors, new ways of bringing the visitors and their money into the city.

That's why the trust wants to appoint a full-time games manager now. In the past, a short-term manager has come in, tried to re-invent the wheel, done their 12 months-plus dash and been outta here.

We need someone to stay the course – long-term preparation is paramount; continuity is key. That's why the trust wants the \$100,000. Kinda makes sense.

Any correspondence to this column can be directed to email: rivercitypress@xtra.co.nz which will be passed on to Mark.

# Whanganui trainer and Marton workers recognised in Skills Highway Awards

- By Karen Hughes (abridged)

Whanganui education provider, Training For You, has received recognition in the recently announced Skills Highway Champion Awards. These Awards recognise excellence in workplace literacy and numeracy training.

Training For You has been working with Marton food producer, Speirs Foods, over the past two years and several Speirs Foods employees have gained accolades in the Skills Highway Awards: Shaun Keenan won in the Champion Learner category and his colleague, Trevor Collins, was highly commended. As well, an entire group of Speirs employees was recognised, gaining a Highly Commended Award in the Champion Learner Group category.

Training For You tutor, Diane Paterson, has been Highly Commended in the Champion Trainer category. Diane was nominated in recognition of her ability to form positive learning relationships with learners from a wide range of



Speirs Foods staff member, Trevor Collins, Highly Commended in the Skills Highway Champion Learner awards, receives his programme completion certificate with Speirs Foods management and Training For You teaching staff, at the Speirs Food premises. From left: Alta Els of Training For You, Ross Kane of Speirs Foods, Trevor Collins, Diane Paterson of Training For You

- Photo credit: Karen Hughes/Training For You

backgrounds and skill levels.

A sister company to Training For You - Capital Training of Wellington - also had success with a win for their tutor, David Pankhurst, in the Champion Trainer category.

The Skills Highway Champion awards were formally presented at the Skills Highway Forum in Auckland on December 4.

Meanwhile, a special event was held recently at the Speirs Foods premises to mark the completion of the programme and the achievements of the Skills Highway winners.

Five employees of Speirs Foods made a presentation to the senior management team. The presentation was the culmination of the twenty-week course in which participants developed their communication skills and explored the ways in which they con-

tribute to the value chain.

Speirs Foods employee, Allisha Hansen, told Speirs management that she hoped they continue running the training: "I'm glad that I have been given the chance to better myself with the company. There have been a lot of topics in this course that have

helped me - conflict management, assertive communication. I'm now able to communicate better with my workers."

For further information on the benefits of free Workplace Training, contact Rachel Smith at Training For You, 0800 438 848.



## WHAT'S ON IN THE COMMUNITY

### AGM Whanganui Arts Centre Trust

Postponed to new year - Date to be confirmed.

### Alcoholics Anonymous

Phone 0800 229 6757. If you have a drinking problem maybe we can help. AA Wanganui area meeting list: Sunday, St Johns Lutheran Church Hall, 51 Liverpool Street, Wanganui, 9am; Monday, Friendship Hall, Morris Street, Marton, 7.30pm; Tuesday, St Johns Lutheran Church Hall, 51 Liverpool Street, Wanganui, 12.30pm; Wednesday, St Luke's Church Hall, 34 Manuka Street, Castlecliff, 7.30pm; Thursday, St Johns Lutheran Church Hall, 51 Liverpool Street, Wanganui, 7.30pm; Tuesday, Al Anon, Quakers, 256 Wicksteed Street, 7.30pm; Friday, Gonville Library meeting room, 12.30pm. Ph 0508 425 266.

### At Wisdom is Yours Wellbeing Centre

Saturday meditation 10.30am suitable for all. Cost is a donation. Open Night Thursday 19th, 5pm-8.30pm. The Avenue is having late night shopping so we thought we'd offer \$20 treatments so you can rejuvenate. Contact (06) 3455002 for more information or pop in and see us. Open Monday to Friday 9am - 5pm, Saturdays 10am - 3pm.

### Clairvoyance Demonstration

Clairvoyance, philosophy and healing at the Wanganui Spiritual and Awareness Centre. Our Speaker this week is Shellie Hanley from Shannon who will be playing her harp and sharing her story with us. This will be our last meeting for the year and we will reconvene on 12 January 2020. 25 Tawa Street, Wanganui. Sunday's 7pm. All welcome. Cost by donation. Like our Facebook page or contact Robert on 345 6308.

### Experience the Sound of Soul

Sing HU, a sacred sound and ancient mantra to expand your awareness and bring spiritual insight. Enjoy conversation with others of like mind. Sunday 2:00 - 3:00pm, Conference Rm, 1st Floor Community House, 60 Ridgway St. For more information Ph. 344 7057.

### Jigsaw Exchange

Last meeting this year Saturday, 14 December at 10am. More than 400 jigsaws to choose from, free exchange. Contact Jack 343 1404 or 021 02775391 or email rega21@xtra.co.nz. Note there will be no meeting in January 2020. Wishing everyone all the best for the festive season.

### Josephite Retreat Centre

Christmas Liturgy - Meri Kirihimete. (Please bring a non-perishable food item to assist those in need at this

time). Sunday, 15 December, 4 - 5pm. To Register please call Pam on 345 5047 ext 3, or email pam.hopper@sosj.org.au.

### Josephite Retreat Centre

**Tui Motu Group** - Tui Motu, an Independent Catholic Magazine, will challenge us to look with fresh eyes, with gospel eyes, at current social, ecological and spiritual values. Come along and contribute to the discussion-inter-church and inter-faith dialogue is welcomed. Wednesday, 18 December, 4.30 - 6pm with Sr Rita Cahill sj. To Register please call Pam on 345 5047 ext 3, or email pam.hopper@sosj.org.au.

### MIST

Mental Illness Survivors Team, 315 Wicksteed Street, open 9.30am - 3.30pm, Monday to Friday. Closed statutory holidays. A place to share activities and socialise. We offer activities, acceptance and support.

### Rebs Farmers Market

All Saints Church Hall, Moana St, Wanganui East. Spray-free vegetables, fruits and free range eggs, plants. Tuesdays, 2.30pm to 5.30pm. For details contact Michael 344 5032 or 021 2118169.

### Seminar: Getting to Know the Bible Better

7.30pm, Tuesdays, in the Christadelphian Hall, 138 Great North Road. Topic this Tuesday, 17 December: The Final Week - Thursday Early: Peter's Denial, Pilate & Herod. All welcome. Supper and opportunity to chat. Sponsored by Wanganui Christadelphians. For more about us: www.thisisyourbible.com, or phone 342 7726.

### Sylvia's Tappers

Where: At the Whanganui War Memorial Centre. When: Sunday, 15 December at 2pm. Supported by The Stingalongs. Adults \$10; Children \$5. Door Sales will be available.

### Theosophy Whanganui

Exploring spiritual development, philosophy, religion, science and the arts. We have a small library, study groups and regular public discussions. Second Sunday monthly, 2pm. Back river entrance Community Arts Centre, 19 Taupo Quay. Contact Kirsty 021 2123819. TheosophyWhanganui@gmail.com.

### Whanganui Guided Walking Tours

Learn about Whanganui's fascinating 19th and 20th century buildings and monuments, its history, people of interest and events that have fashioned our city. Scheduled Tours leave the i-Site at 10am and 2pm each Saturday and Sunday. Cost \$10 per person. For other times, ring the i-Site for a booking - 349 0508.

### Copyright:

River City Press produces and/or publishes advertisements strictly on the basis that River City Press is entitled to and owns the copyright in the advertisement so far as the copyright relates to publication or reproduction for publication in any newspaper, magazine or similar periodical or to broadcasting of the advertisement.

## RCP

- proud to be locally owned and operated  
- compare our prices!

### What's On in the Community Notices

What's On in the Community notices are \$10 for up to 50 words with the option of a colour heading for an extra \$2 and/or a border for an extra \$10. RCP, 52 Ingestre St, Wanganui by Tuesday 1pm to place your advertisement.

## Merry Christmas

### Season's Greetings from the Team at Eastown Timber & Fencing.

We will be here to assist you with all of your Outdoor Holiday Projects. Come in & see us!

**OUR CHRISTMAS HOURS**

Closed: 25th & 26th December 2019 and 1st & 2nd January 2020

Business as usual through the rest of the holiday season

**Landscaping | Building | Fencing**

**eastown | BuildLink**

TIMBER & FENCING

4 Holyoake St, Wanganui East.  
Ph: 349 0040  
Open: Mon-Fri 7:30am to 5pm  
Sat: 8:30am - Noon

[www.eastownbuildlink.co.nz](http://www.eastownbuildlink.co.nz)



# Wilsons HUNTING and OUTDOORS

Wanganui

**OPEN EVERYDAY  
UNTIL CHRISTMAS**



**Howa Packages from \$899**

**Tackle and  
Bait Stockist**



**Watersport  
Toys**

**NEW**



**Rippton  
Fishing Drone**

**Bunny Busters**



**Slug Rifles from \$69**



**.22 Packages  
from \$299**



**OUR VOUCHERS  
DON'T EXPIRE**

**KIWI CAMPING  
STOCKIST**



**222 Victoria Avenue, Wanganui**  
**Ph 06 348 7679**





# CHRISTMAS CRACKER DEALS!



**INSTAX SQ CAMERA**

**\$199**



**100 6X4 PRINTS**

**\$39**

**SAVE \$20**



**BONUS  
16GB  
ULTRA SD**

**BUY ANY DIGITAL  
CAMERA & GET A  
BONUS 16GB SD**

**WHILE STOCKS LAST  
TERMS & CONDITIONS MAY APPLY  
PROMOTION ENDS 31.12.2019**

 **Wanganui** *'Capturing Wanganui Since 1977'*  
**Camera Centre  
& Framing**

**PHONE: 06 345 6144**

**Open Mon-Fri 8:30am-5:30pm Sat/Sun 9:00am-2:00pm  
Closed Public Holidays**